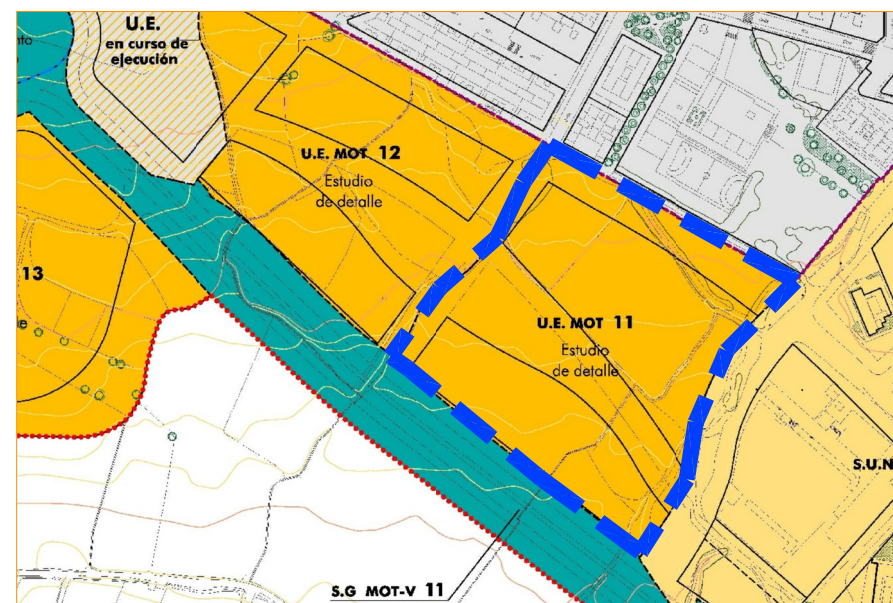


Plano de Situación Motril (PGOU)

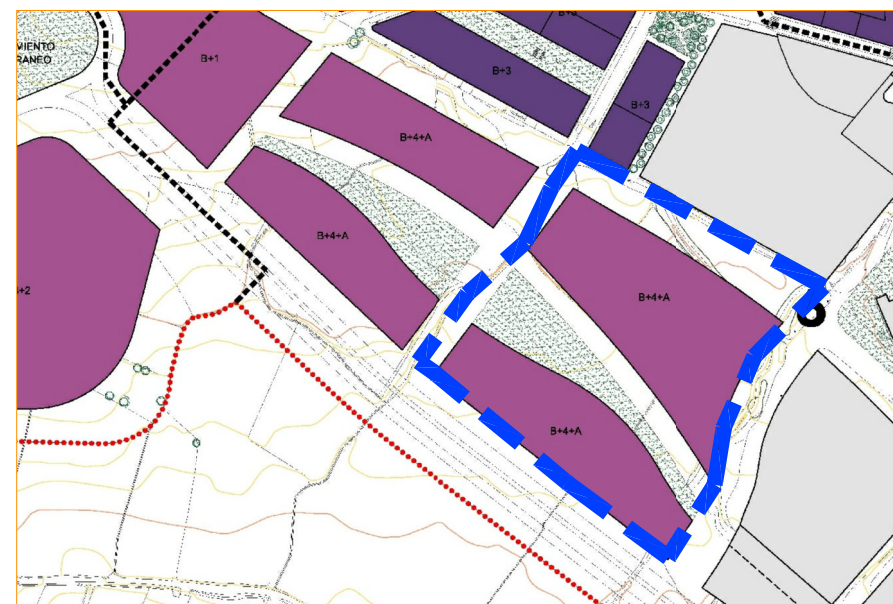
UNIDAD DE EJECUCIÓN MOT-11



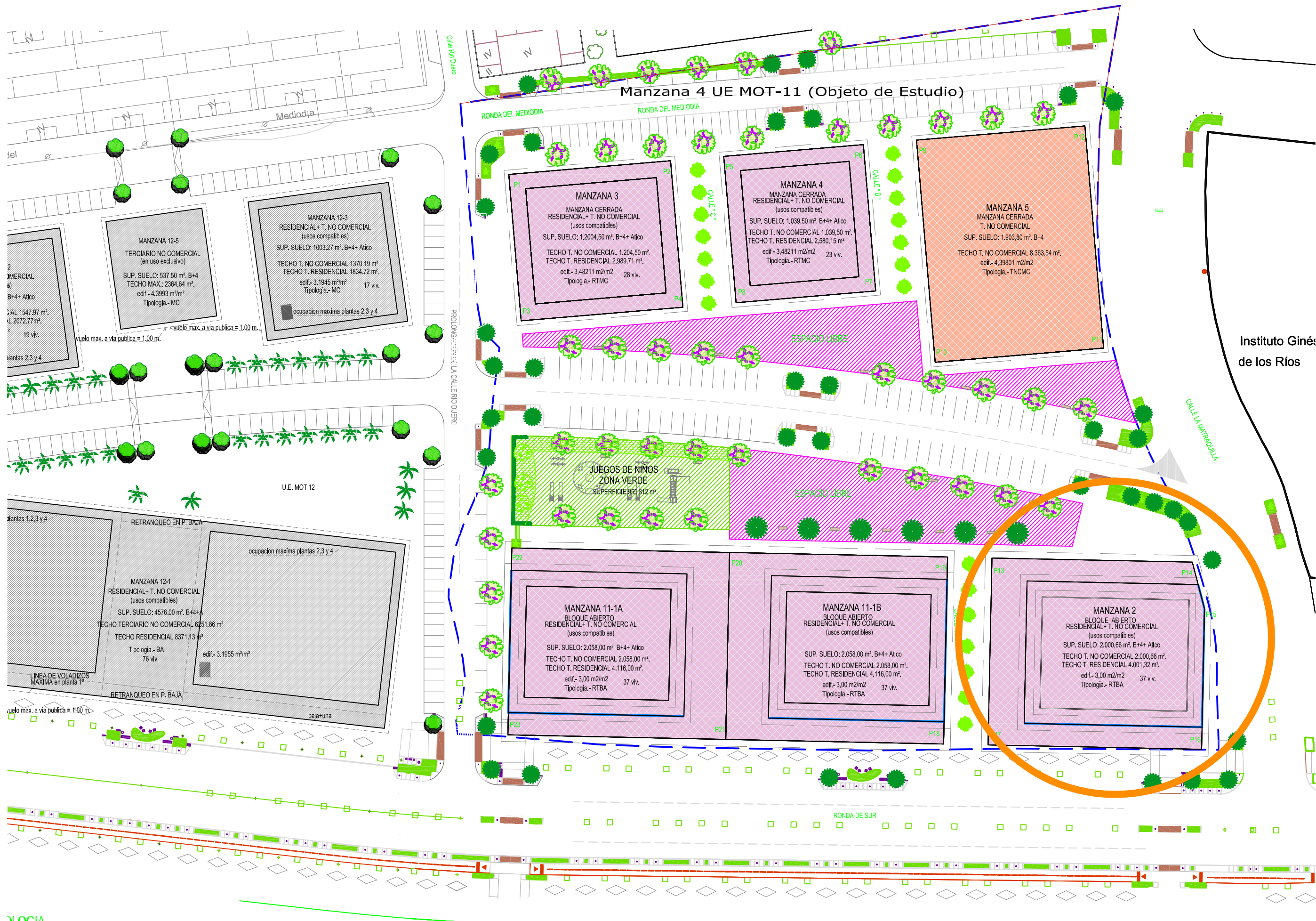
Plano de Usos según PGOU



Plano de Gestión según PGOU



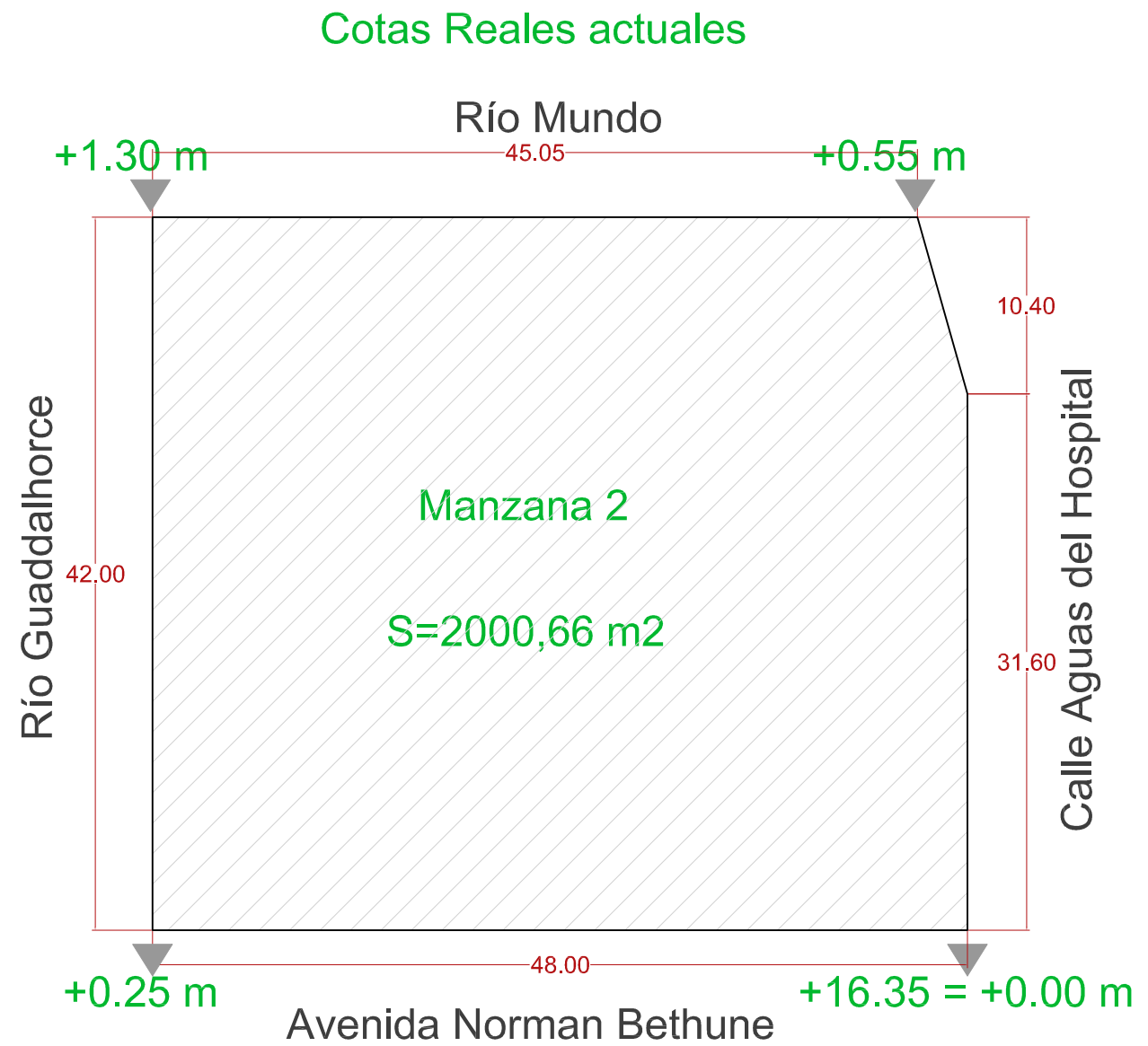
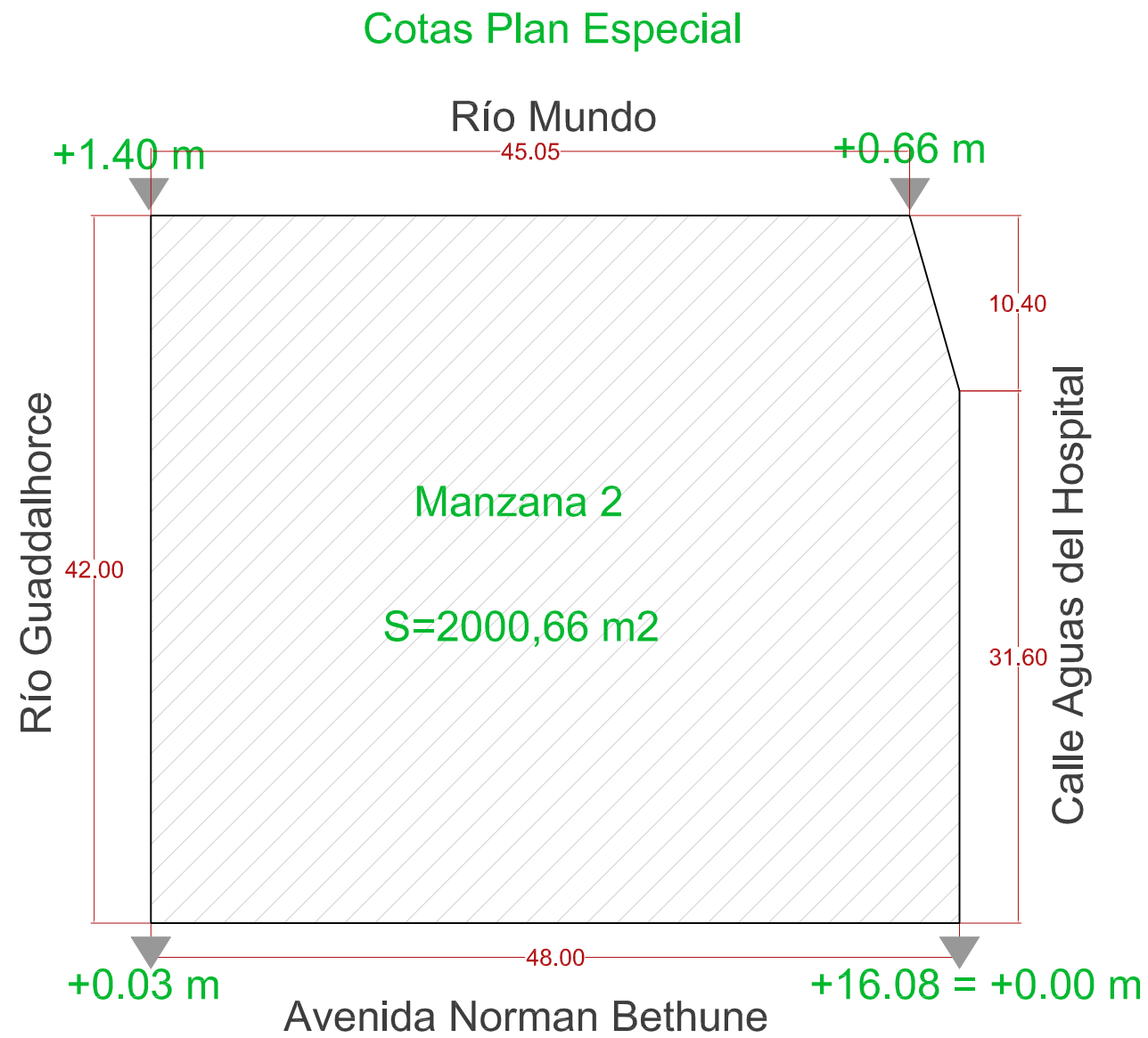
Plano de Regulación de Manzanas, Alturas y alineaciones según PGOU



2

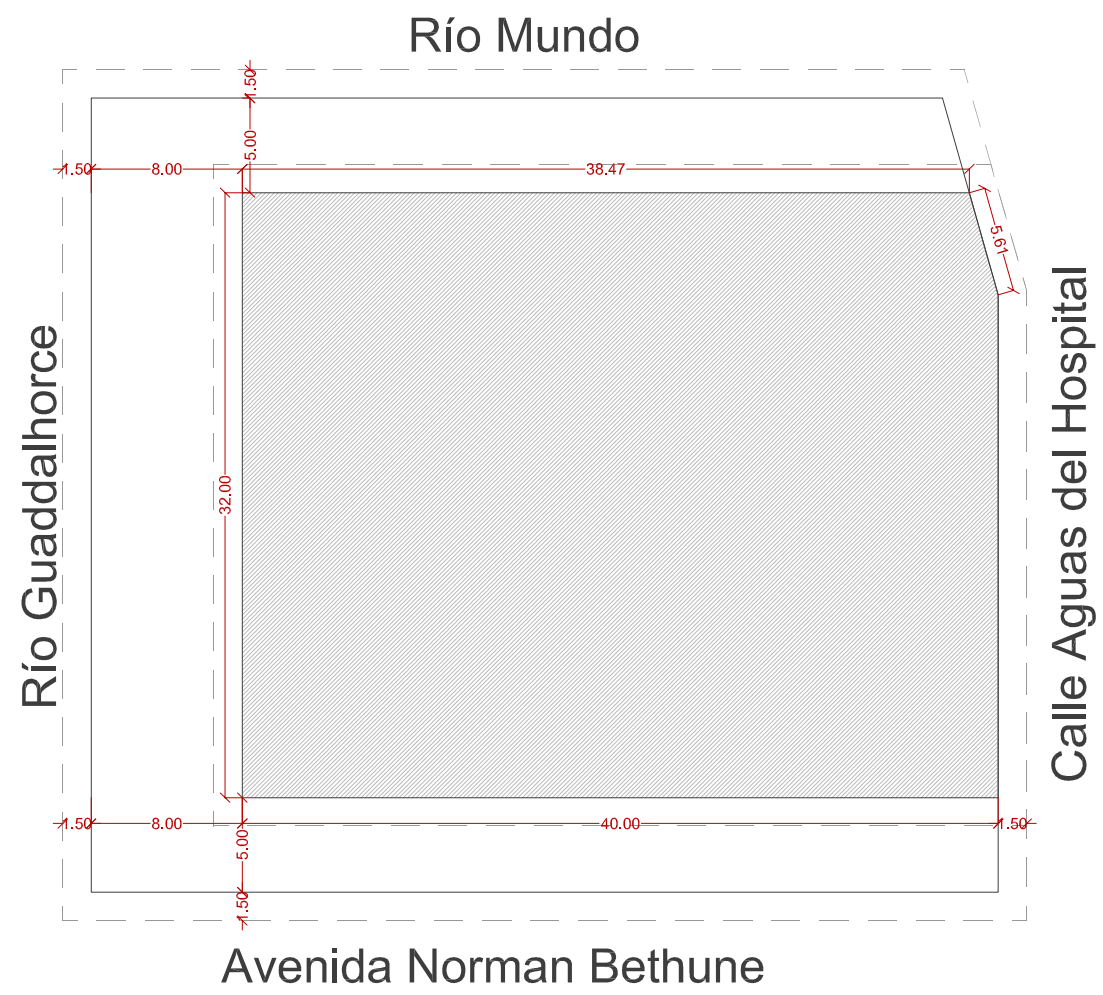
Plano: Ordenación inicial Plan Especial UE MOT-11 Motril (Granada)
 Fecha: Enero 2019
 Escala: 1/800
 Arquitecto: **ACFM** Mercedes Foché Mayas COAG 4801
 Alvaro Castelo Velasco COAM 19155
ARQUITECTOS

ESTUDIO DE DETALLE
 Manzana 12-2 UE.MOT-11 Motril (Granada)

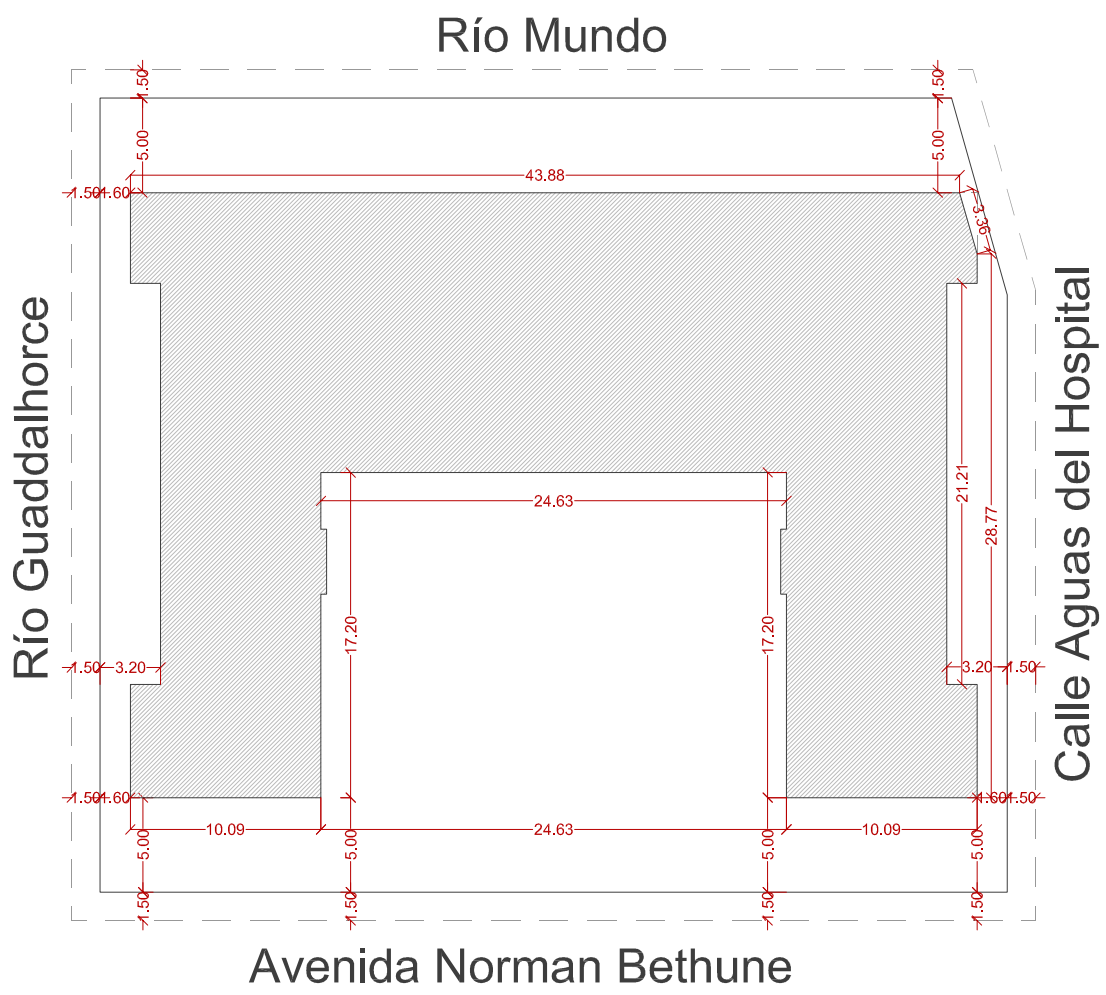


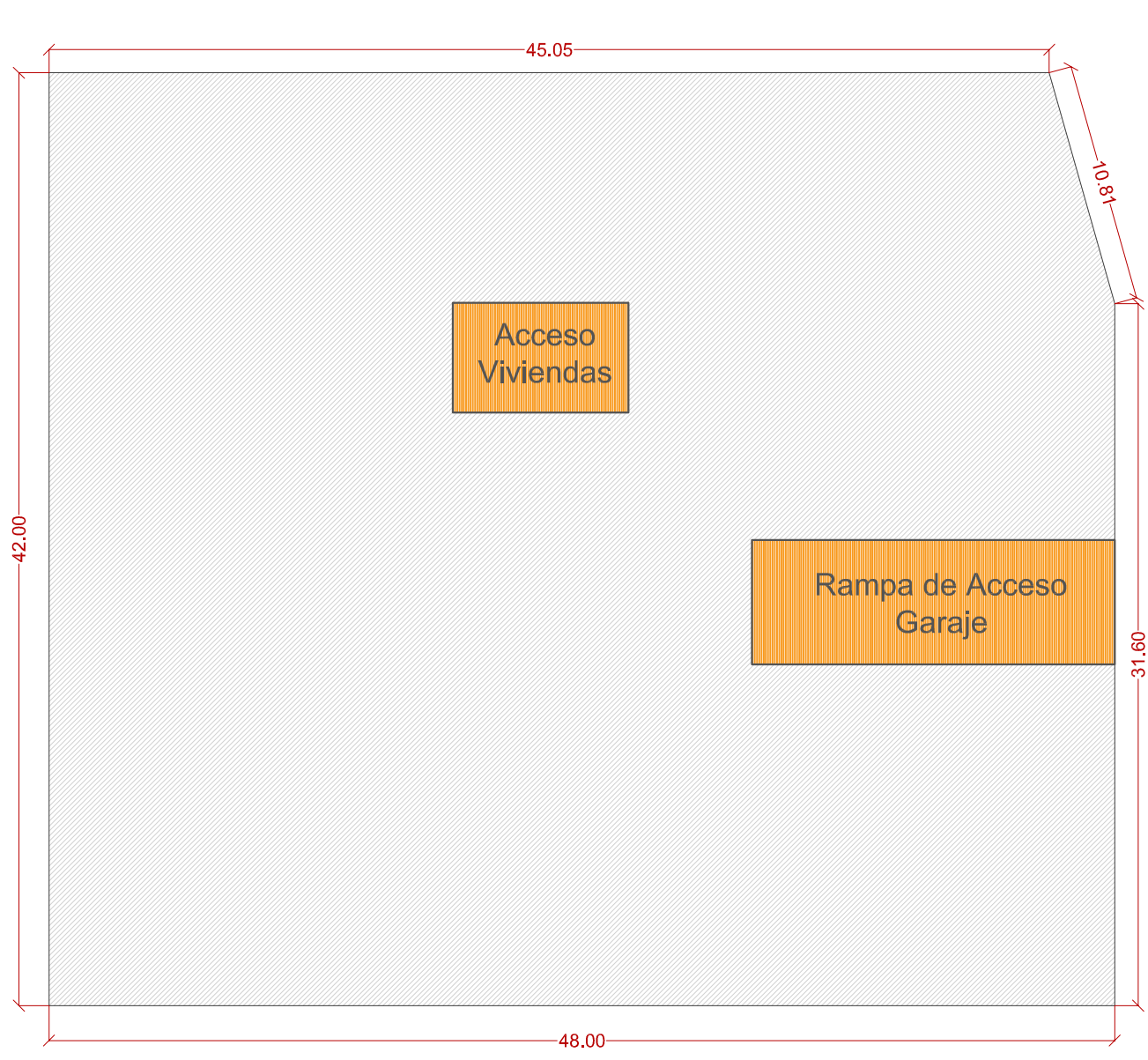


Planta Baja Plan Especial

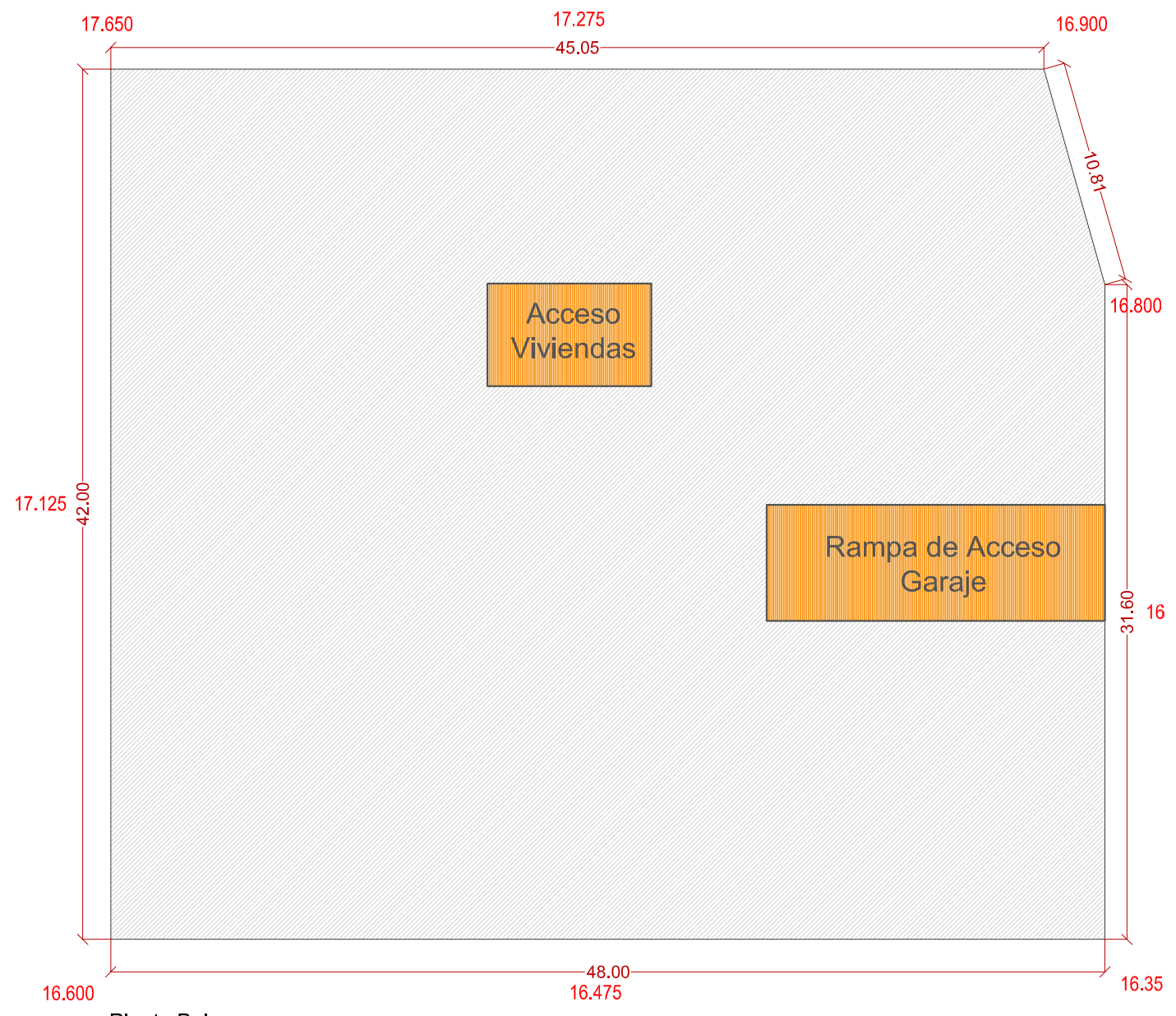


Planta baja Propuesta





Planta Sótano



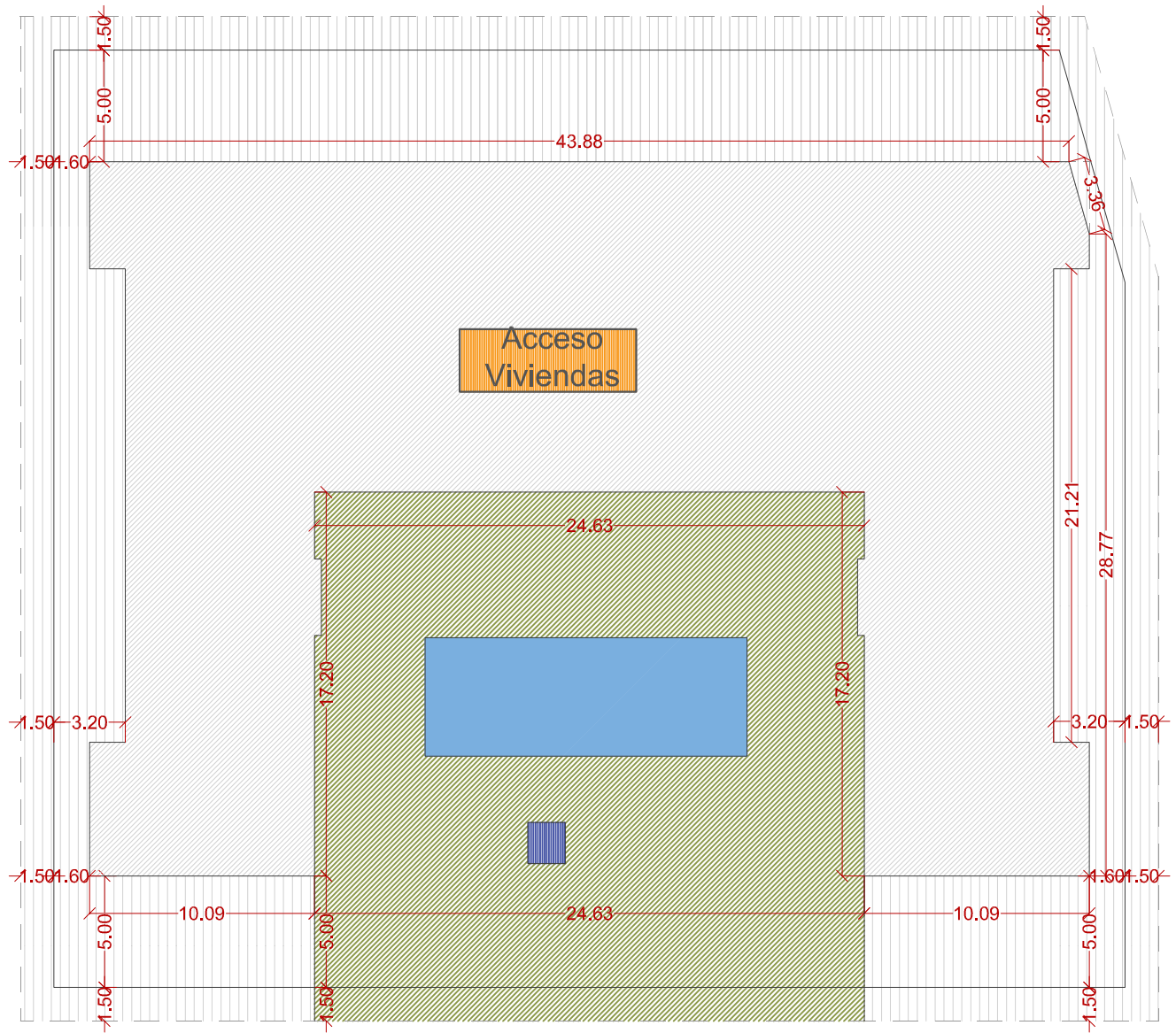
Planta Baja



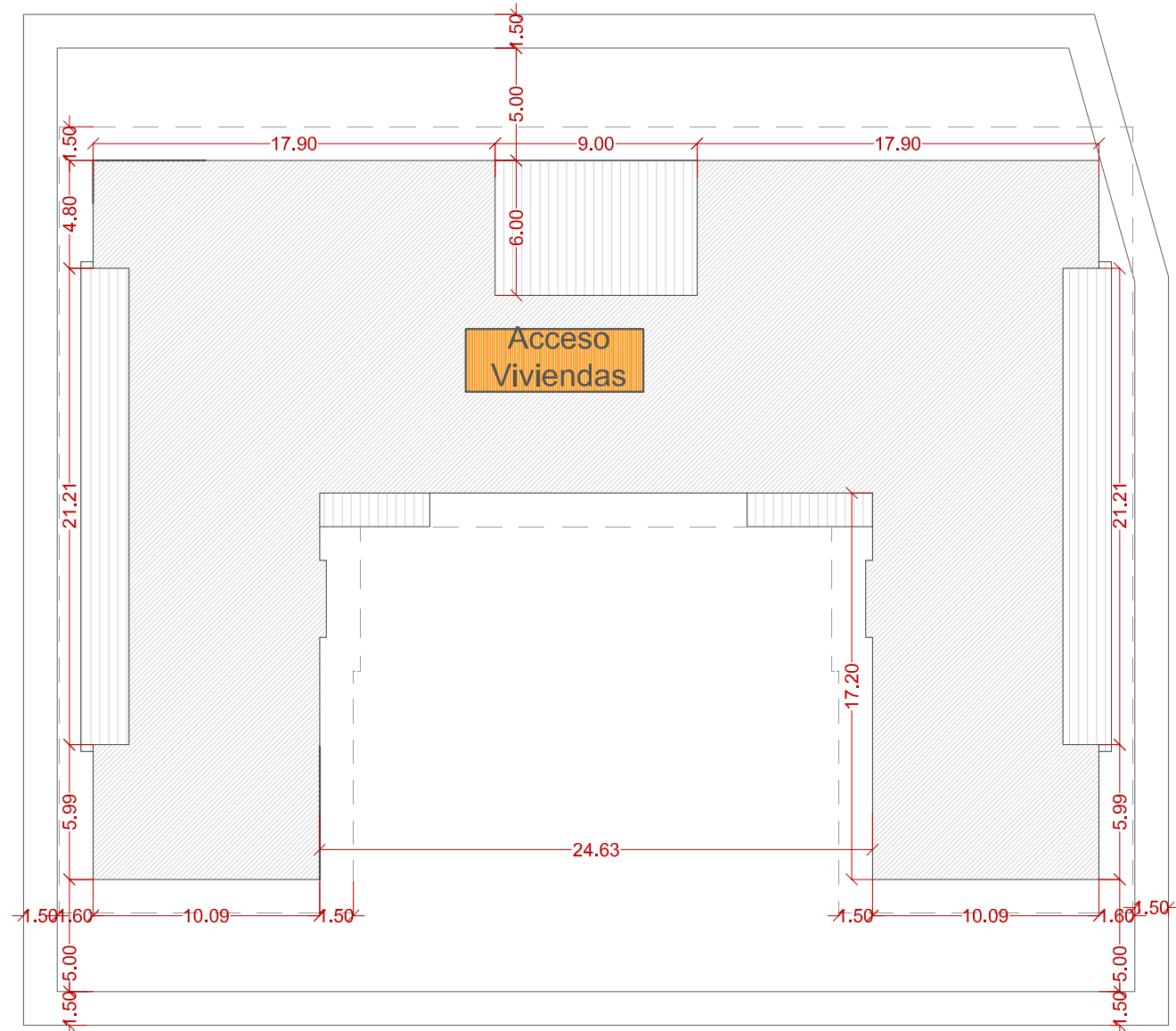
Alzado Sur, Avenida Norman Bethune

Leyenda

- Límite Edificación
- Zonas Comunes
- Zonas libres privadas
- Maximo vuelos
- Núcleos de comunicación
- Ventilaciones



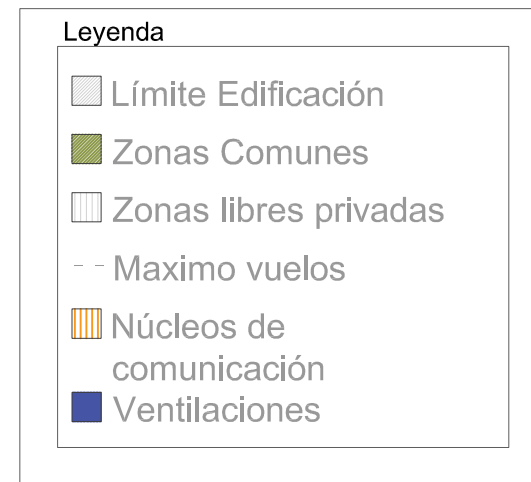
Planta Primera

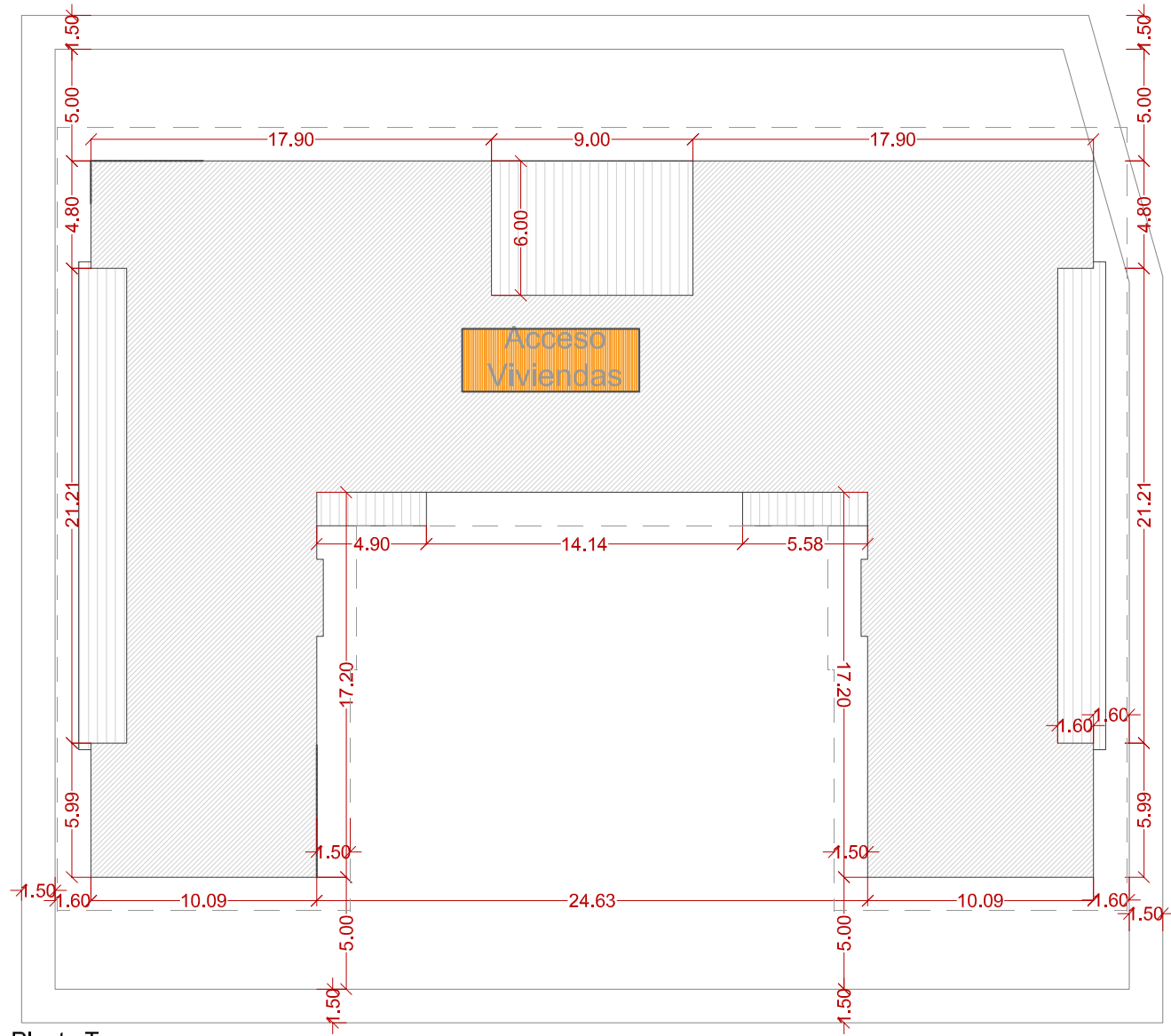


Planta Segunda

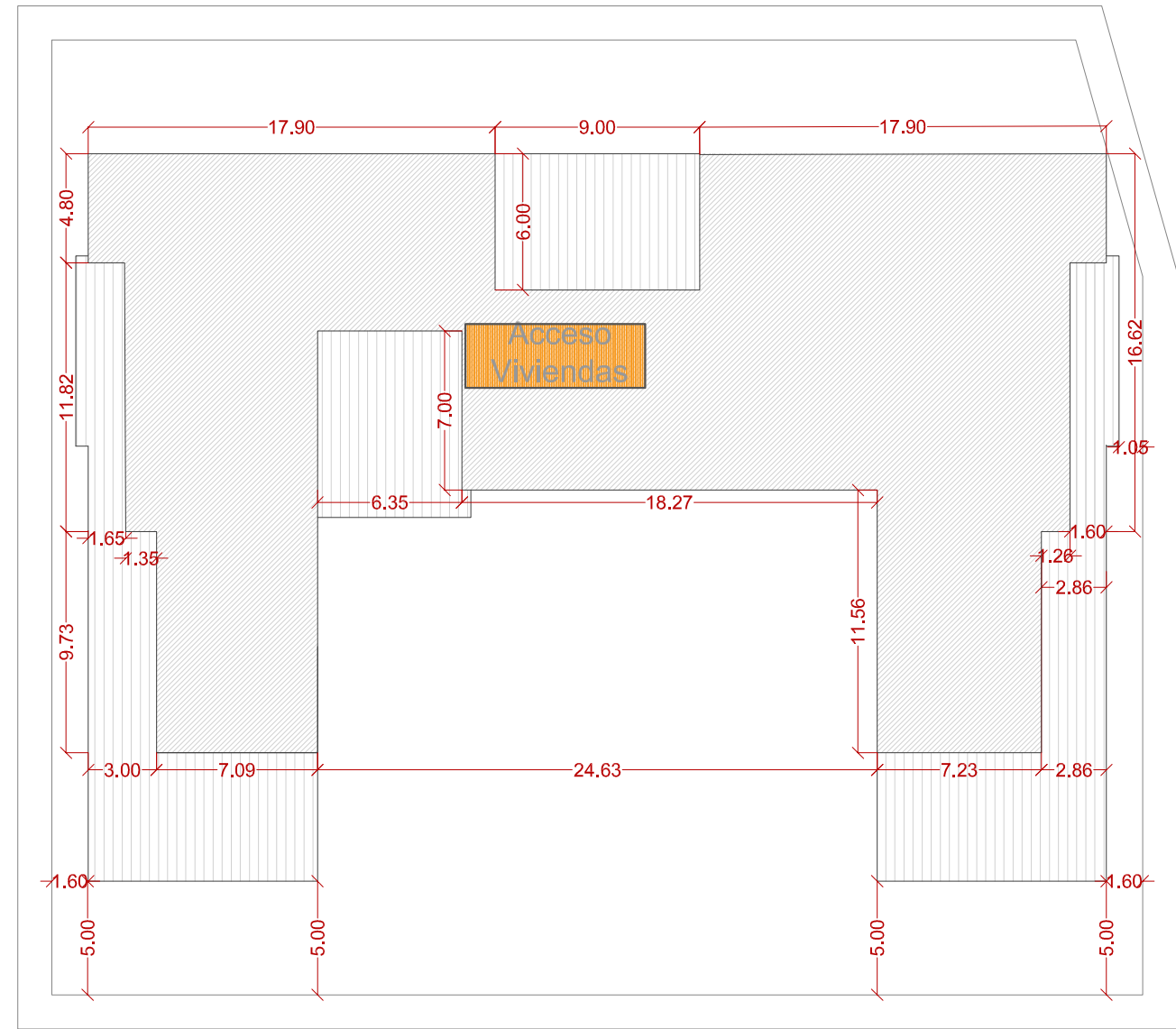


Alzado Norte, Calle Río Mundo

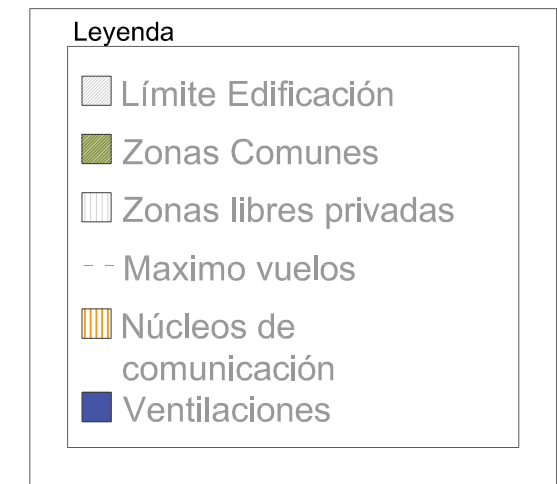




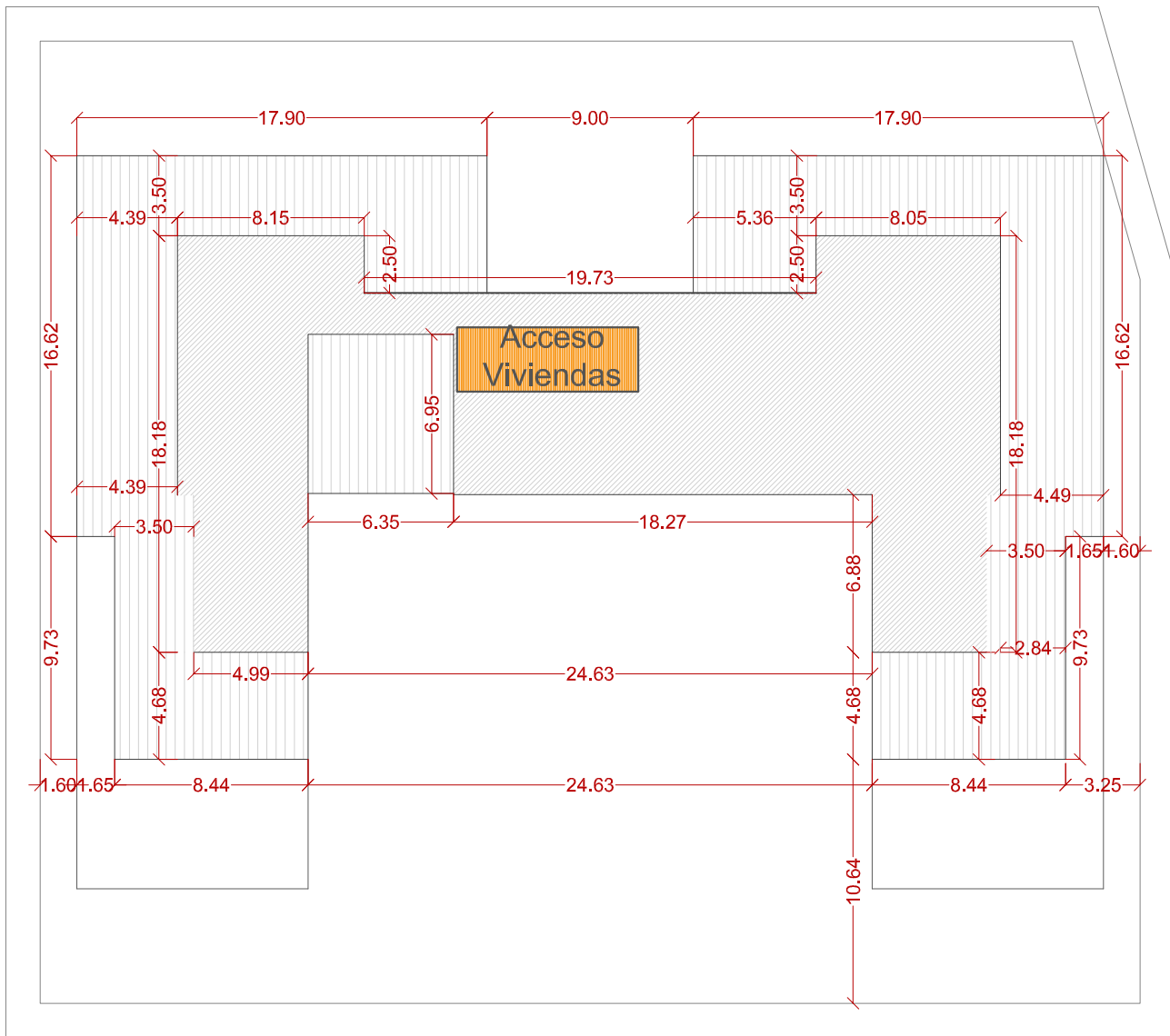
Planta Tercera



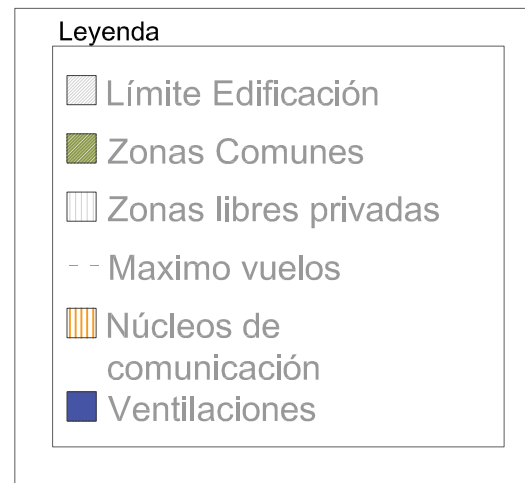
Planta Cuarta



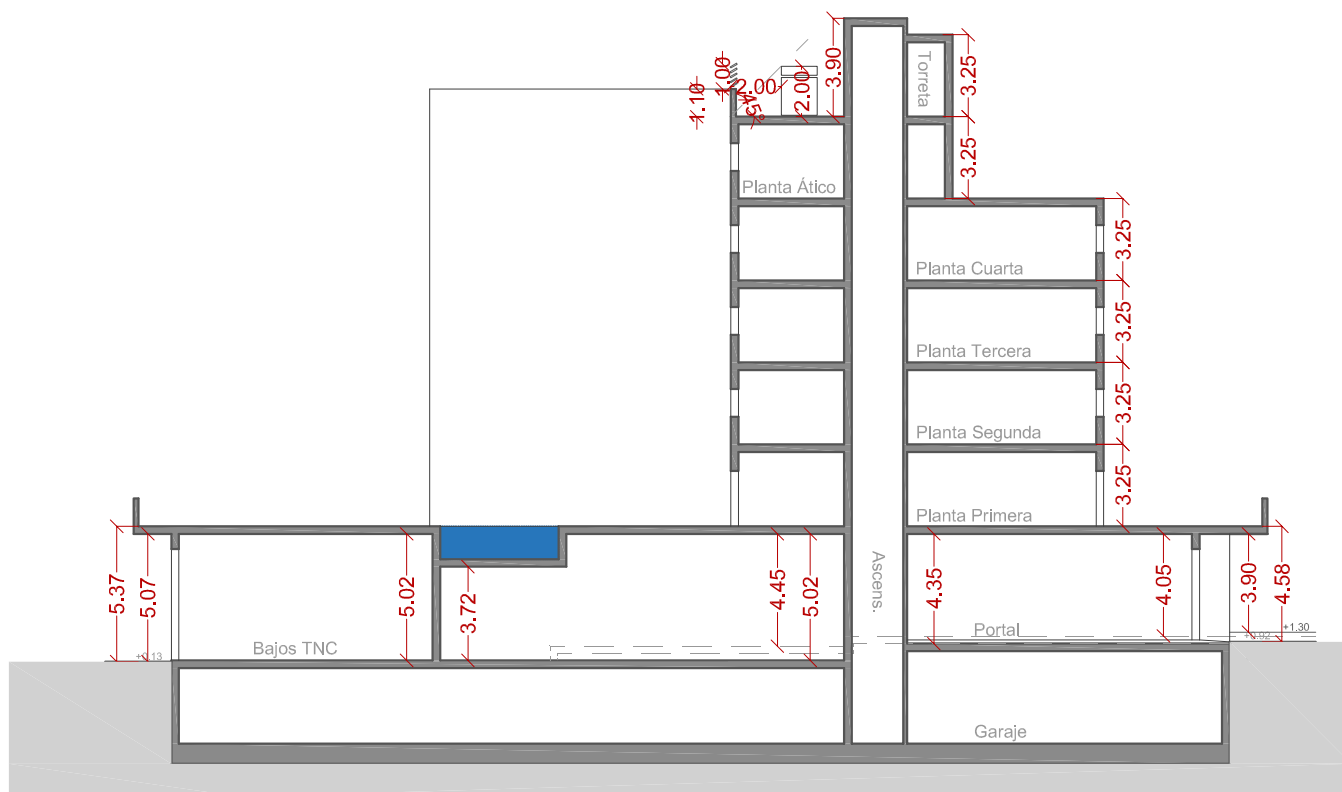
Alzado Este, Calle Aguas del Hospital



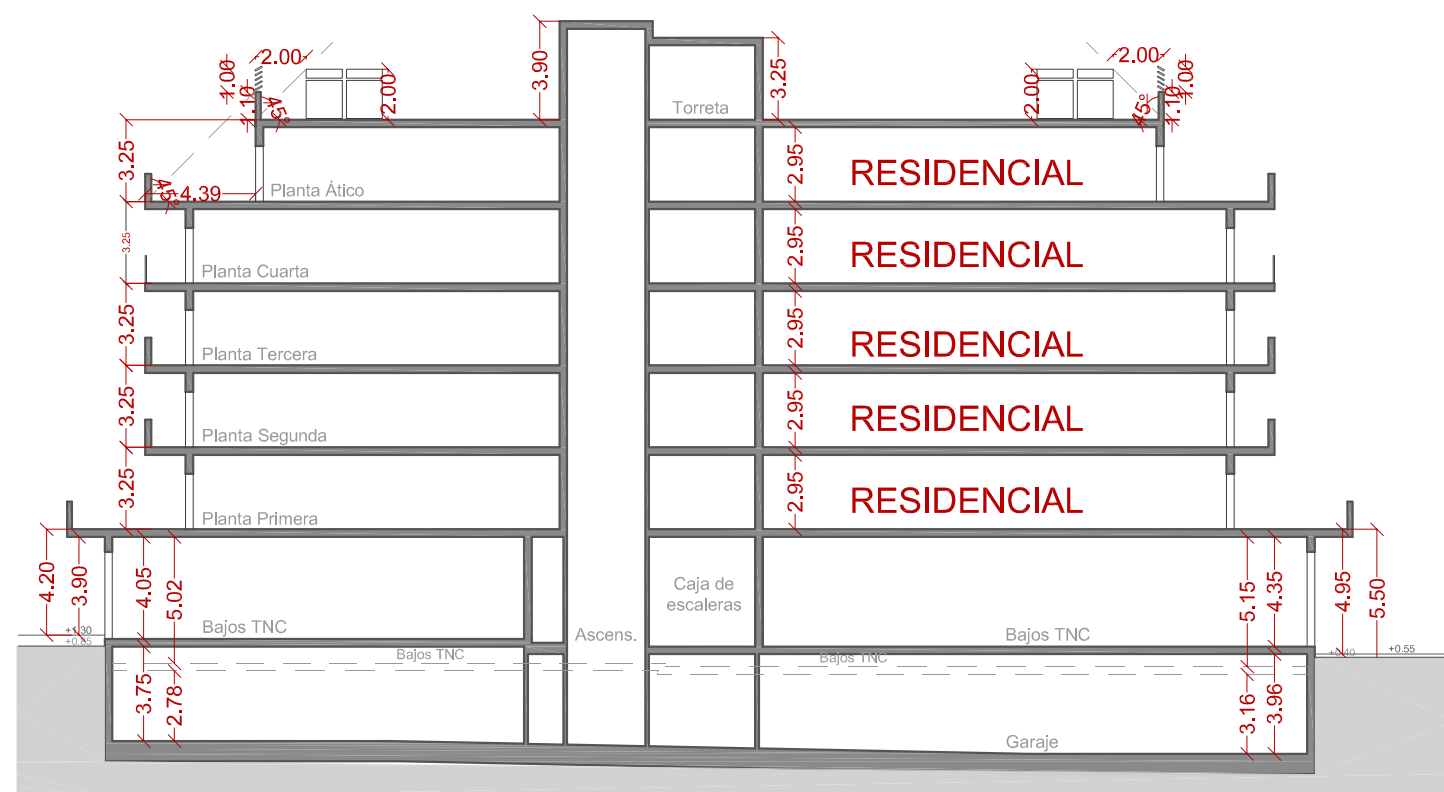
Planta Ático



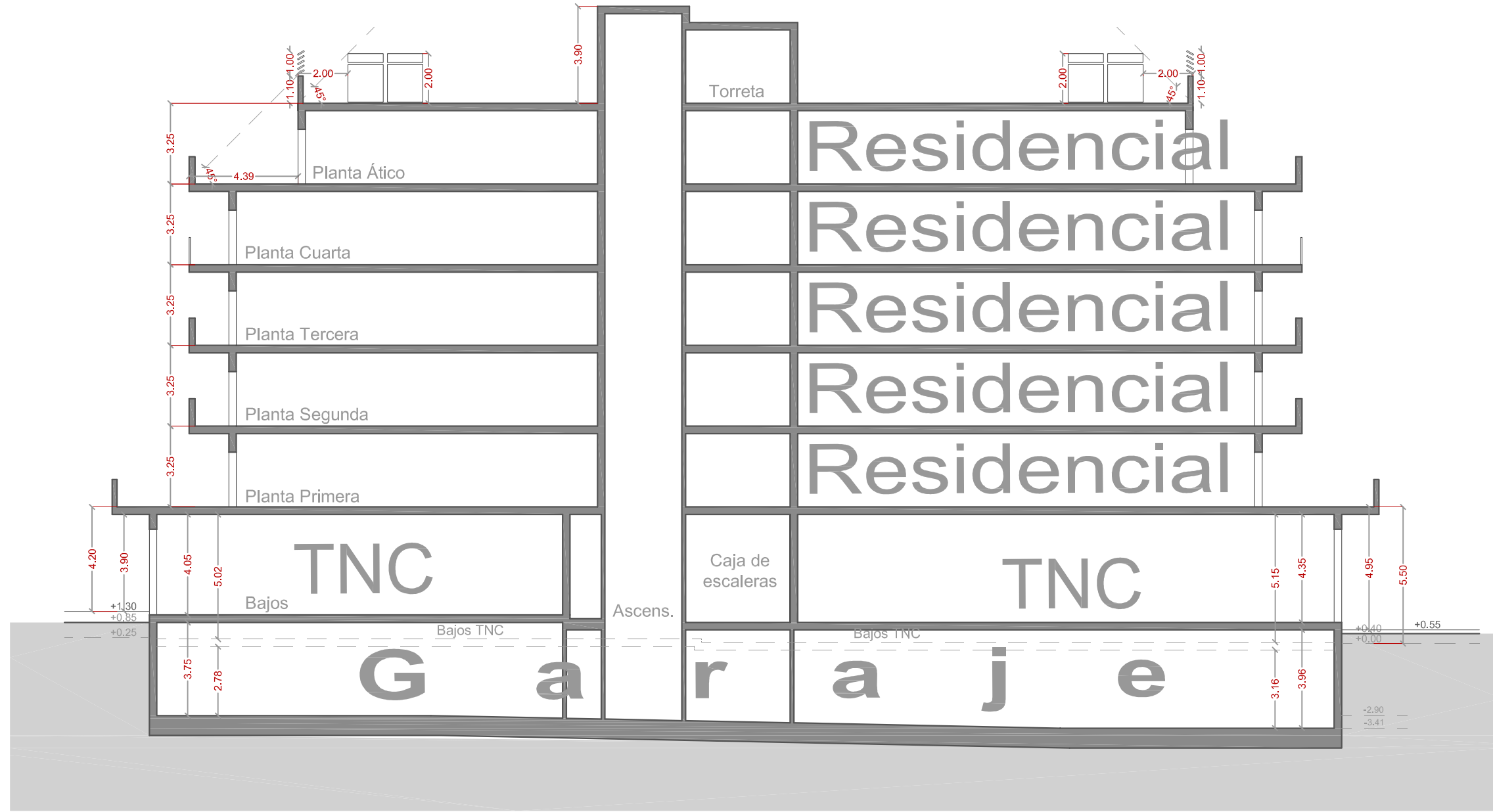
Alzado Oeste, Calle Río Guadalhorce




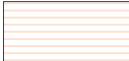

Sección Transversal



Sección Longitudinal



Atico	RESIDENCIAL	
4º Planta		
3º Planta		4.001,52 m ² Max. 41 Viviendas
2º Planta		
1º Planta		
Planta Baja		TNC
Garaje		2.000,66 m ² C

-  Residencial
-  Terciario No Comercial
-  Garaje