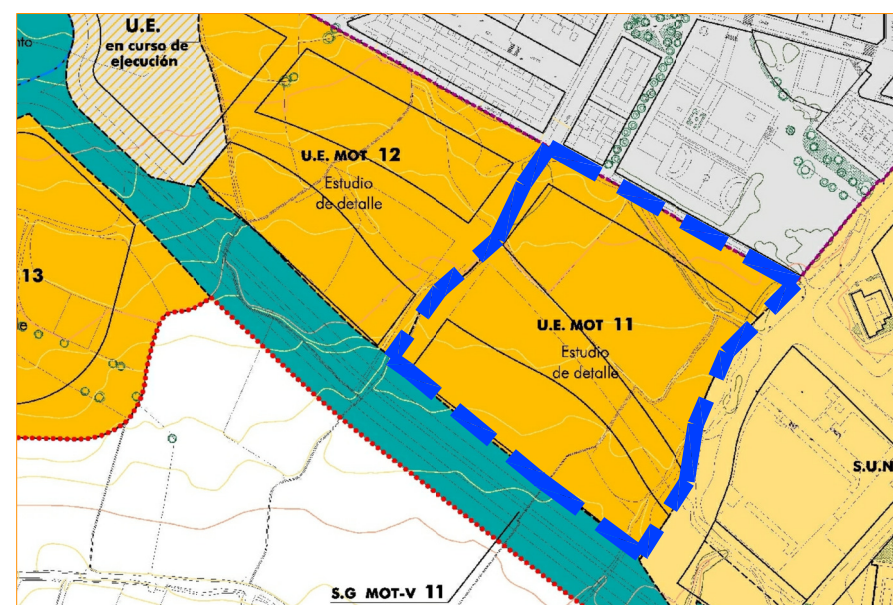


Plano de Situación Motril (PGOU)

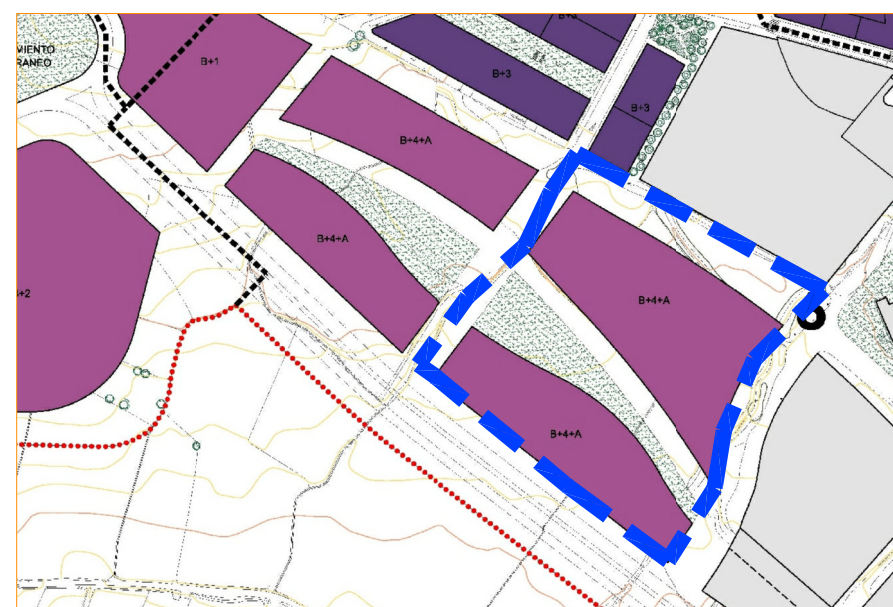
## UNIDAD DE EJECUCIÓN MOT-11



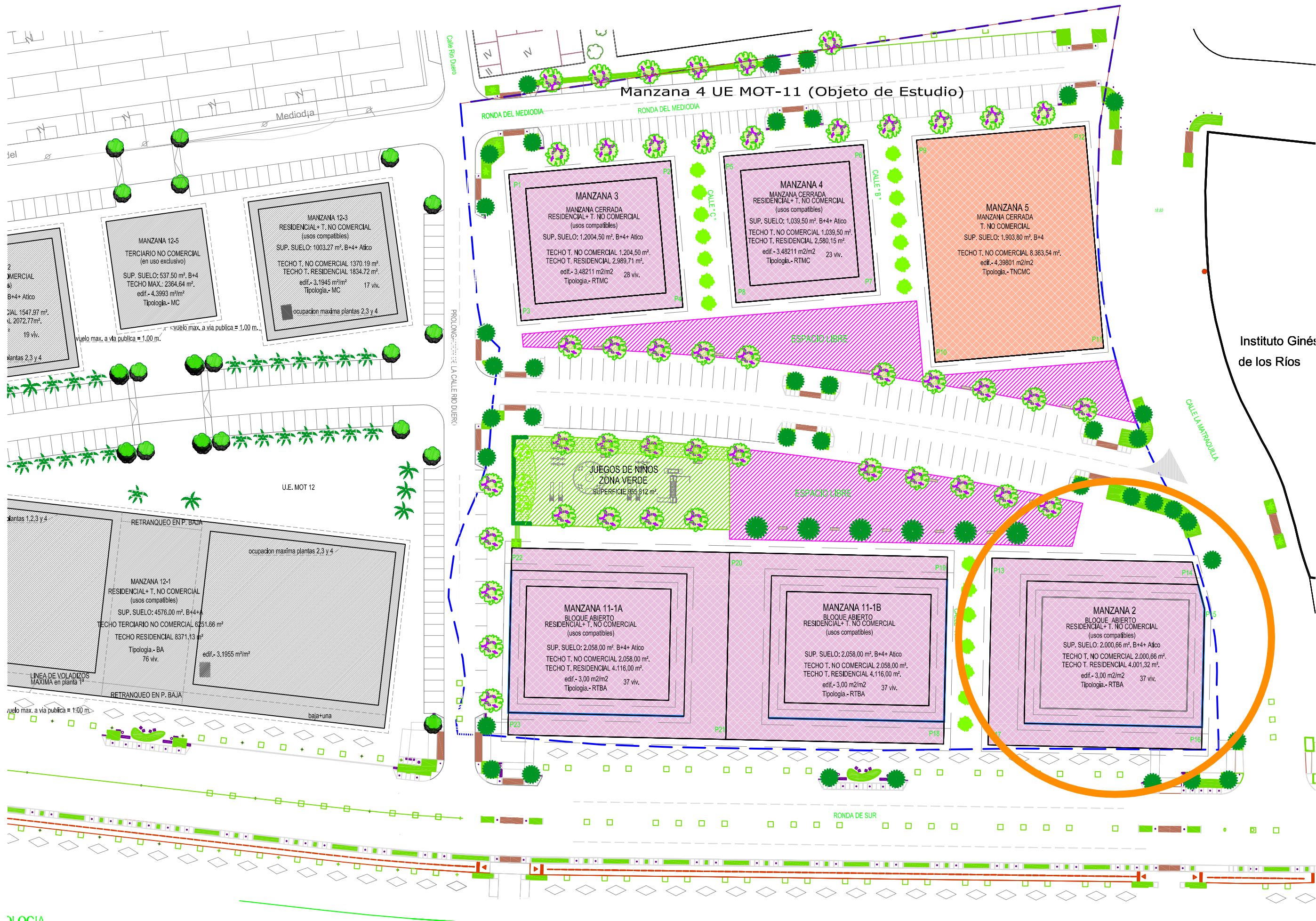
Plano de Usos según PGOU



Plano de Gestión según PGOU



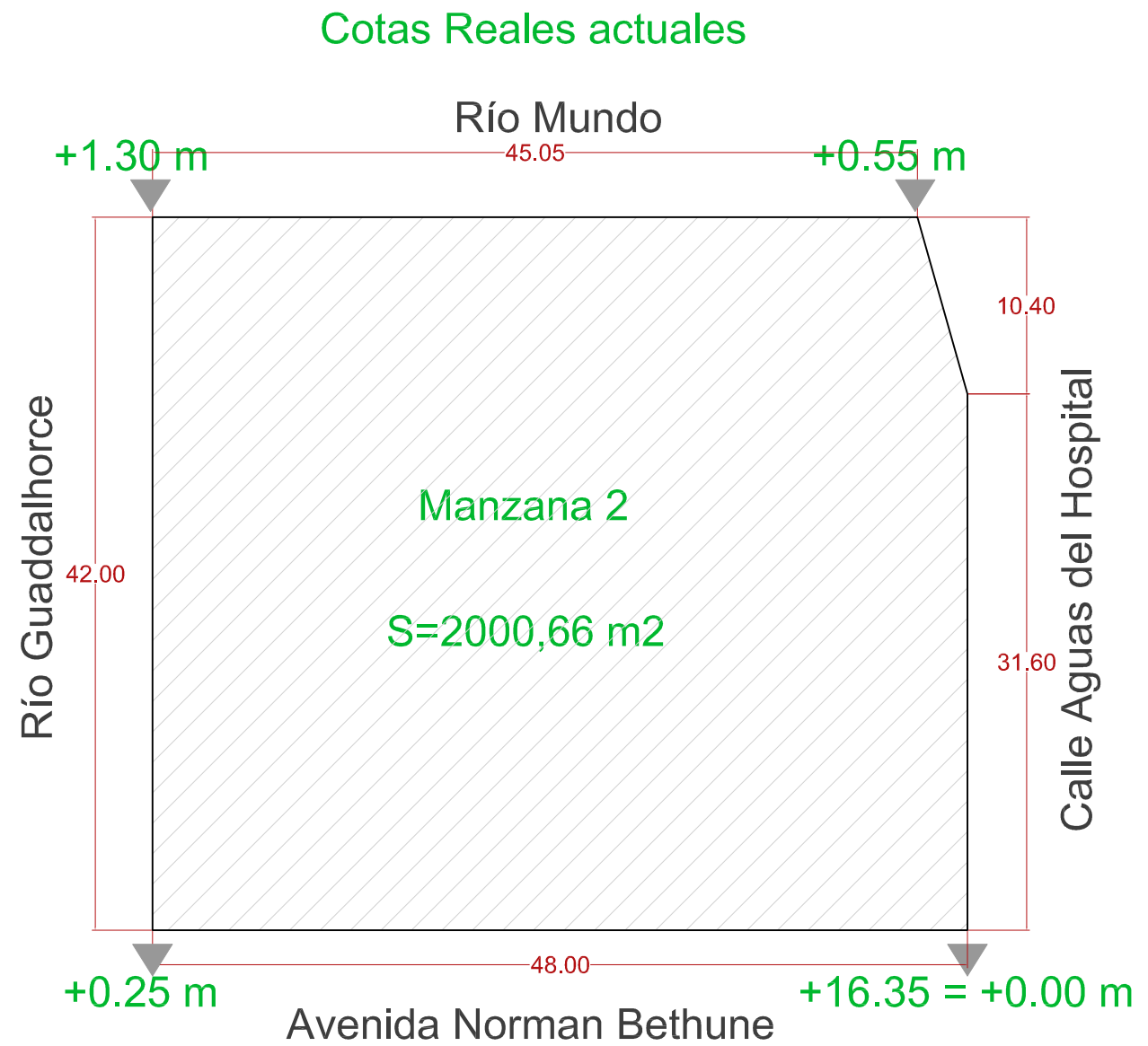
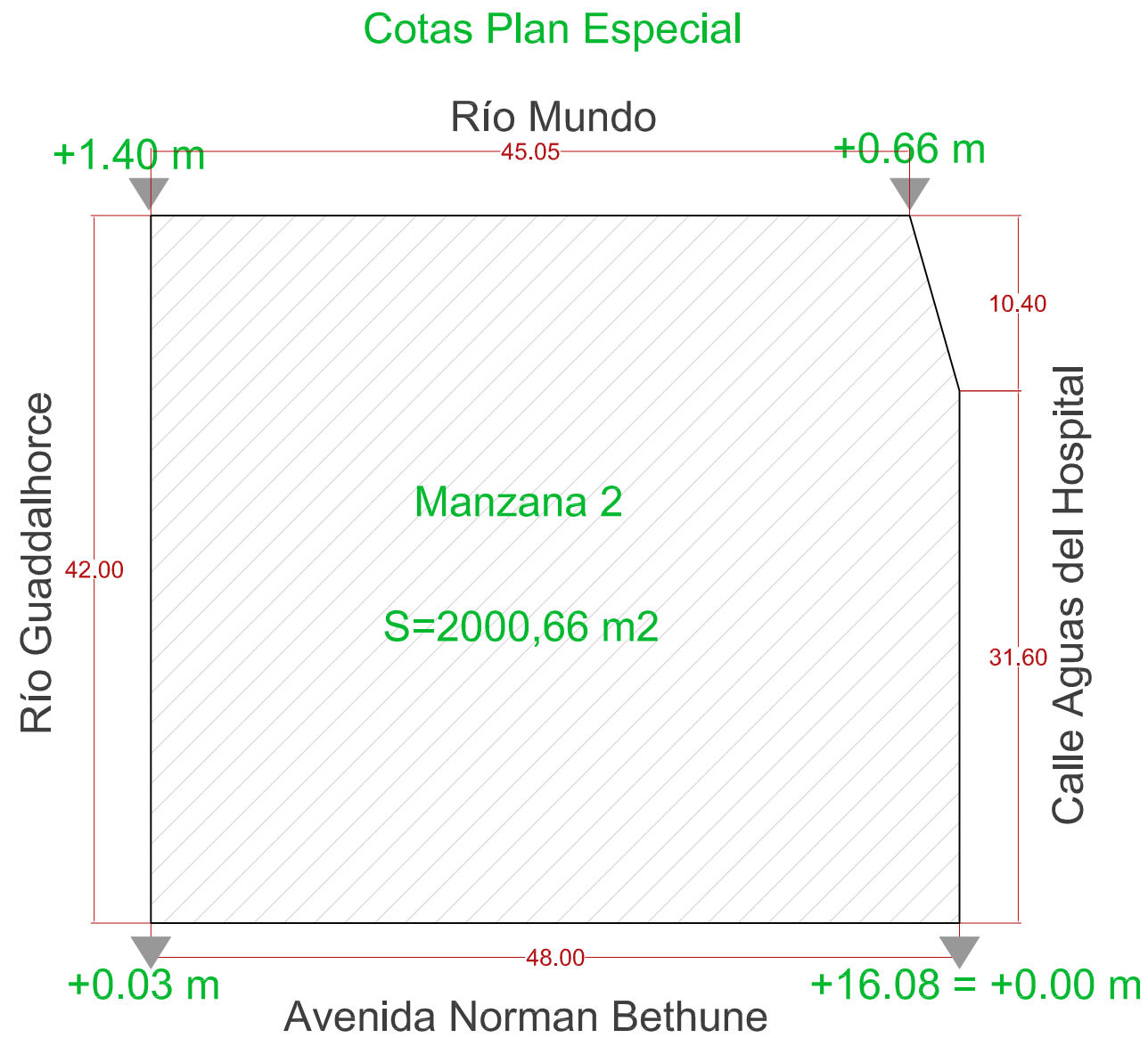
Plano de Regulación de Manzanas, Alturas y alineaciones según PGOU

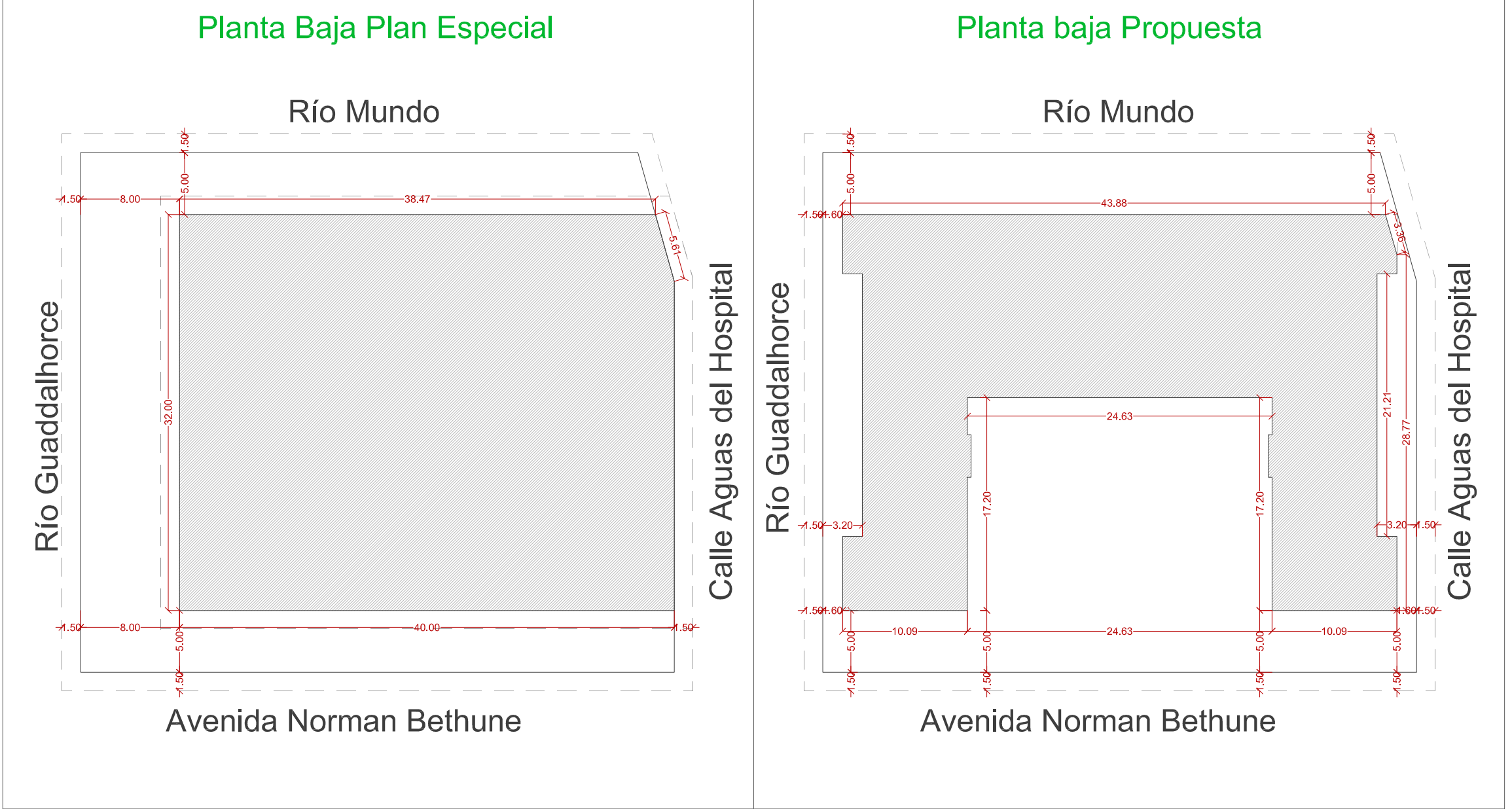


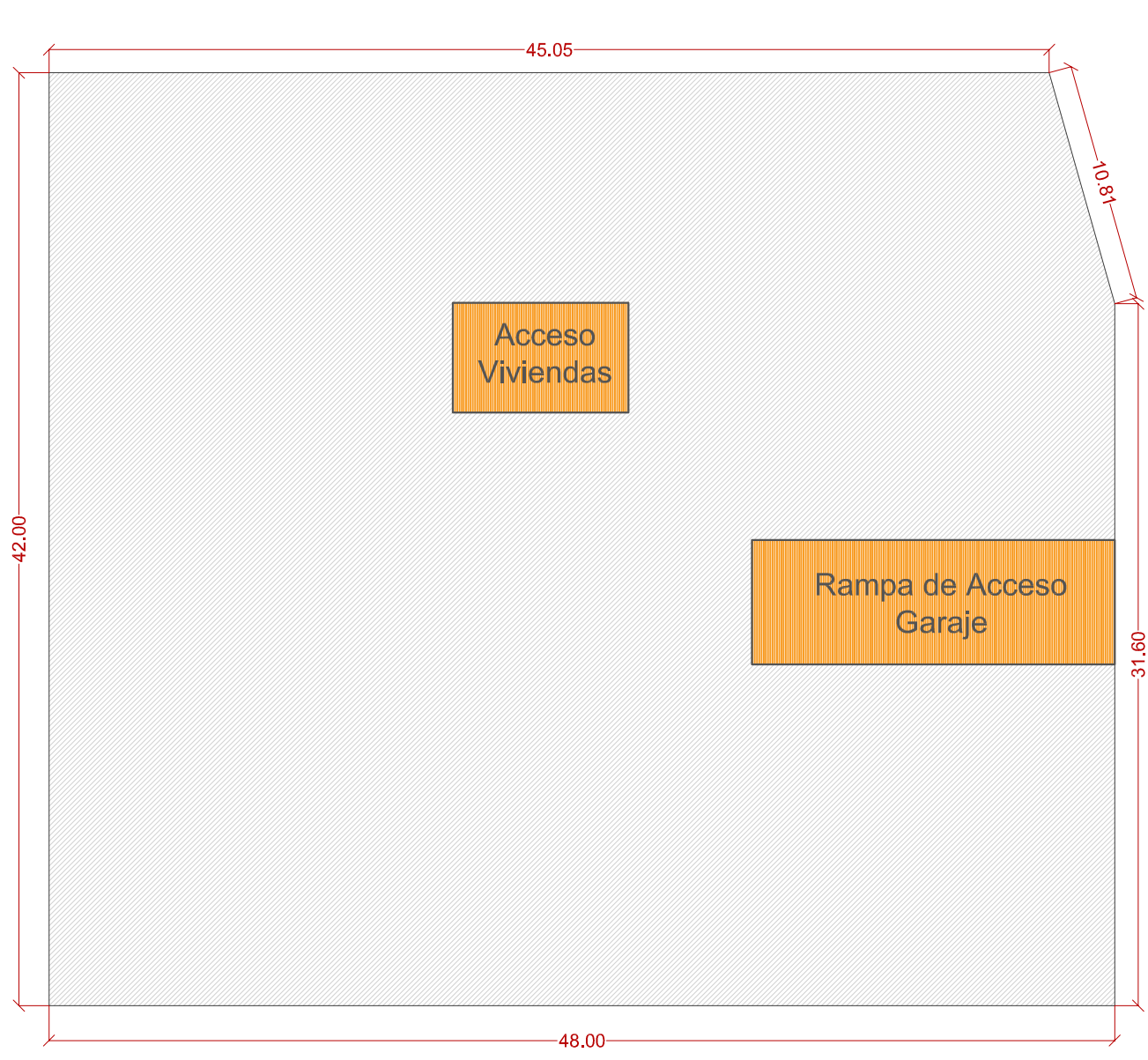
**2**

Plano: Ordenación inicial Plan Especial UE MOT-11 Motril (Granada)  
 Fecha: Enero 2019 Escala: 1/800  
 Arquitecto: **ACFM** Mercedes Foché Mayas COAG 4801  
 Alvaro Castelo Velasco COAM 19155

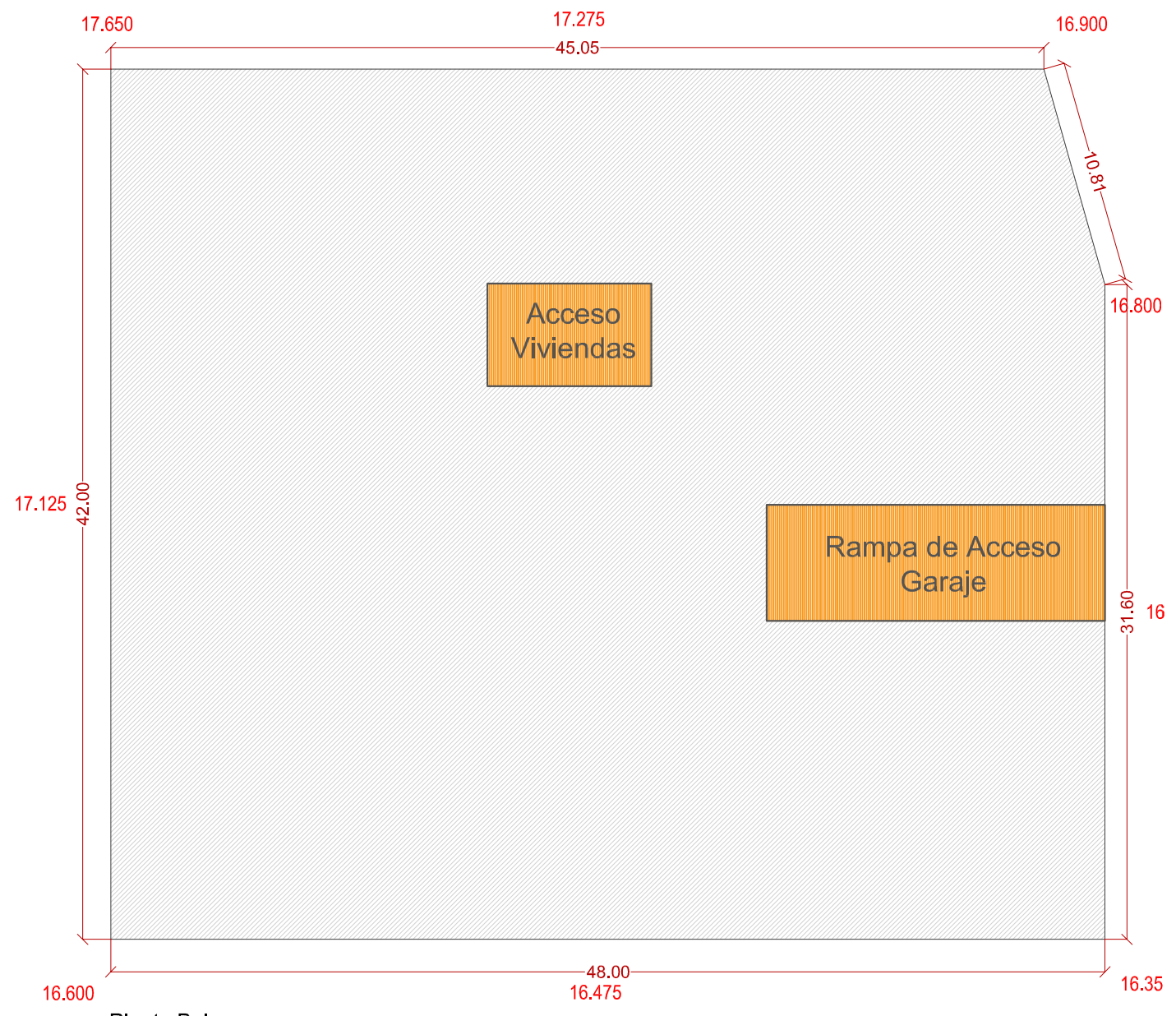
**ESTUDIO DE DETALLE**  
 Manzana 12-2 UE.MOT-11 Motril (Granada)







Planta Sótano



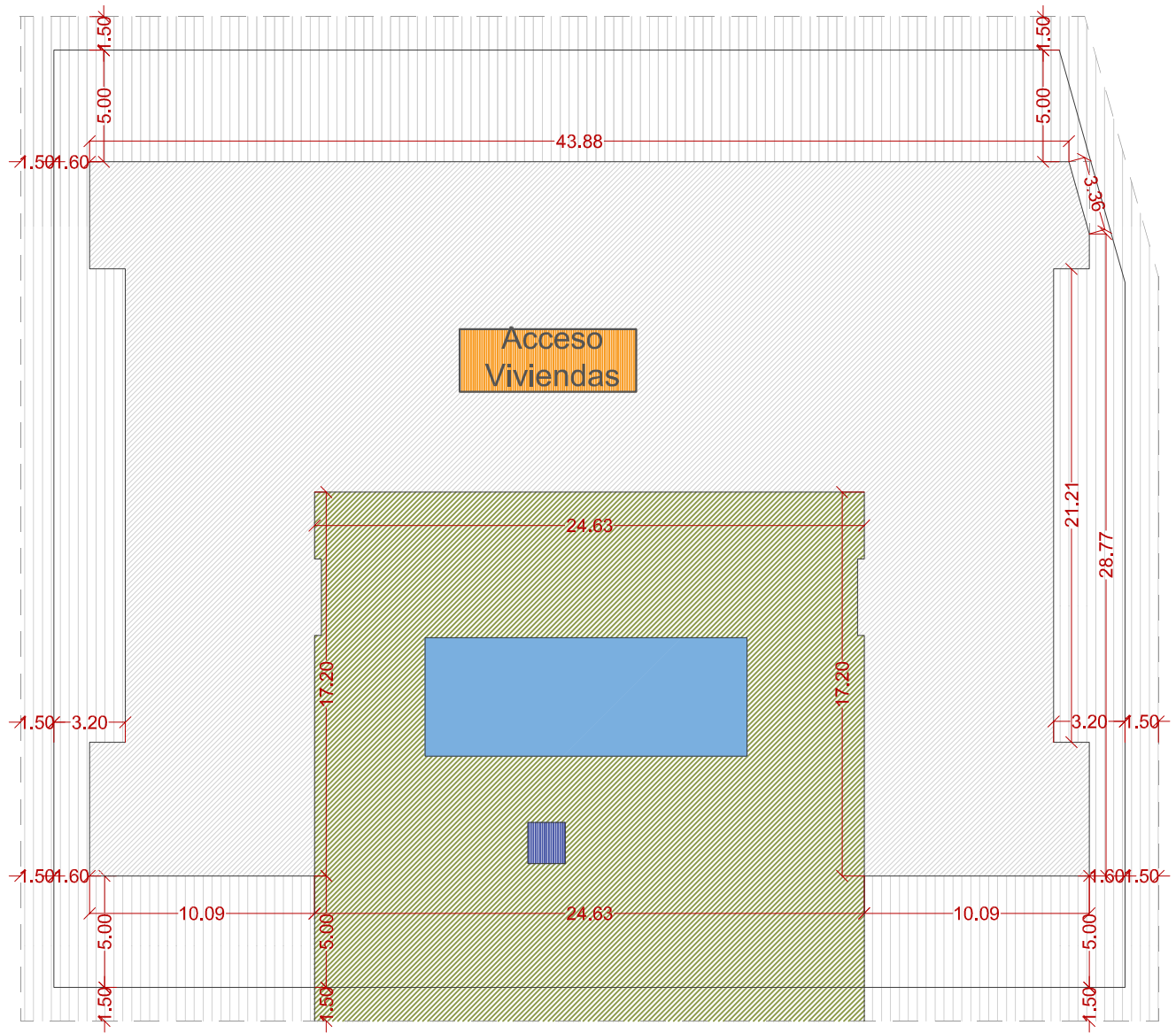
Planta Baja



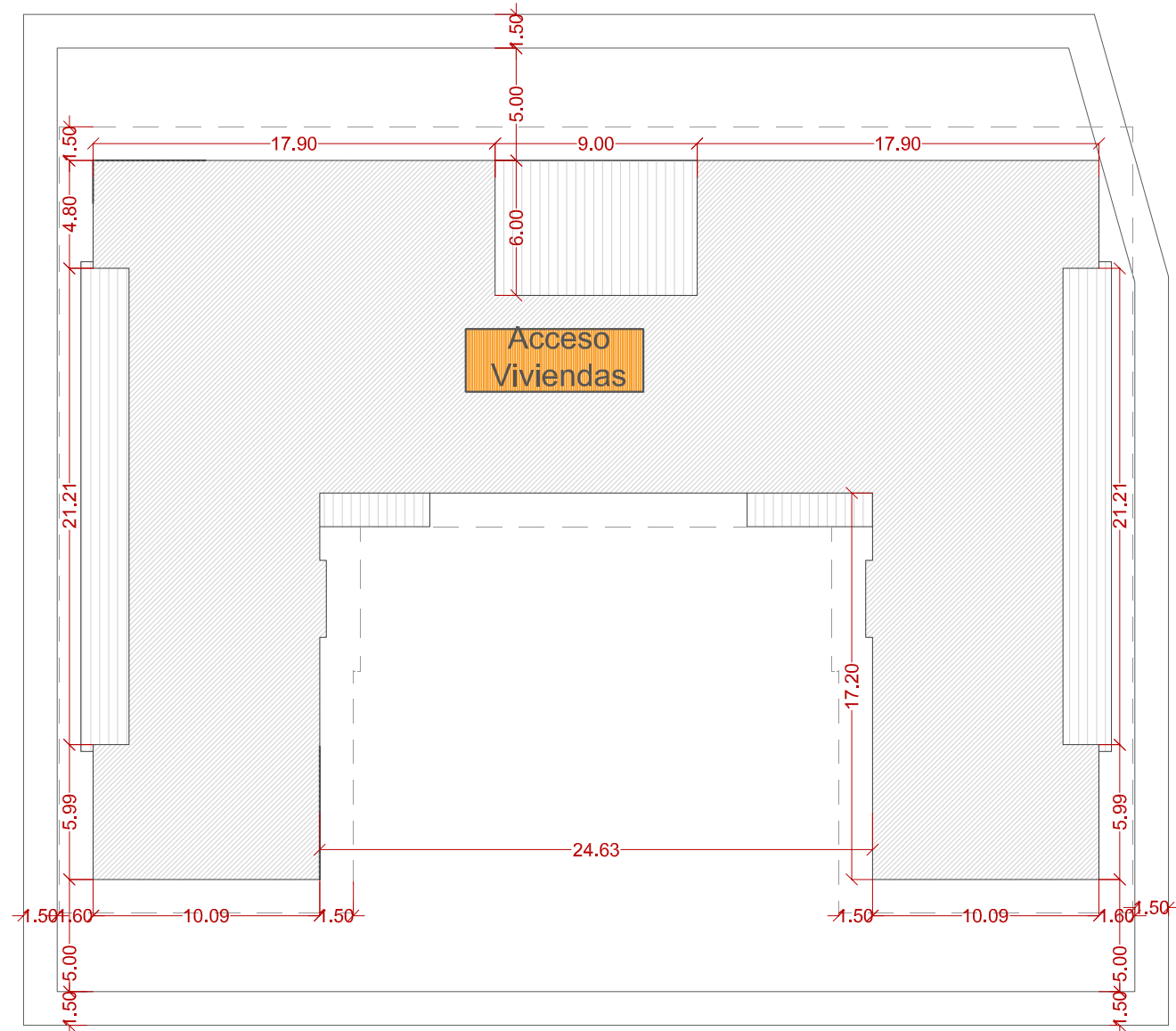
Alzado Sur, Avenida Norman Bethune

**Leyenda**

- Límite Edificación
- Zonas Comunes
- Zonas libres privadas
- Maximo vuelos
- Núcleos de comunicación
- Ventilaciones



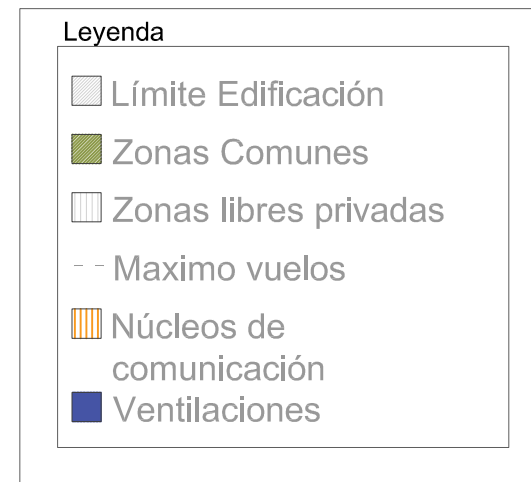
Planta Primera

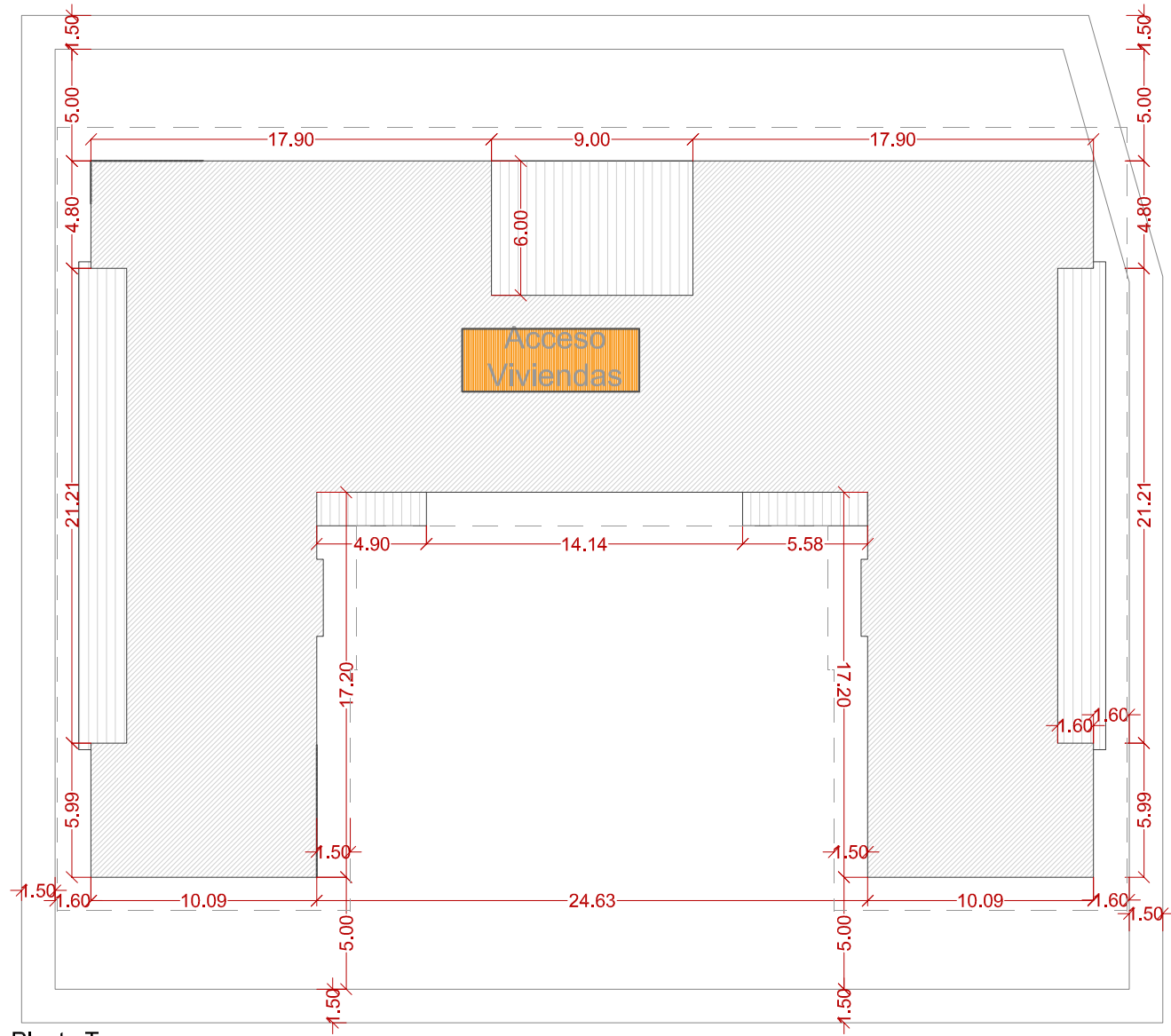


Planta Segunda

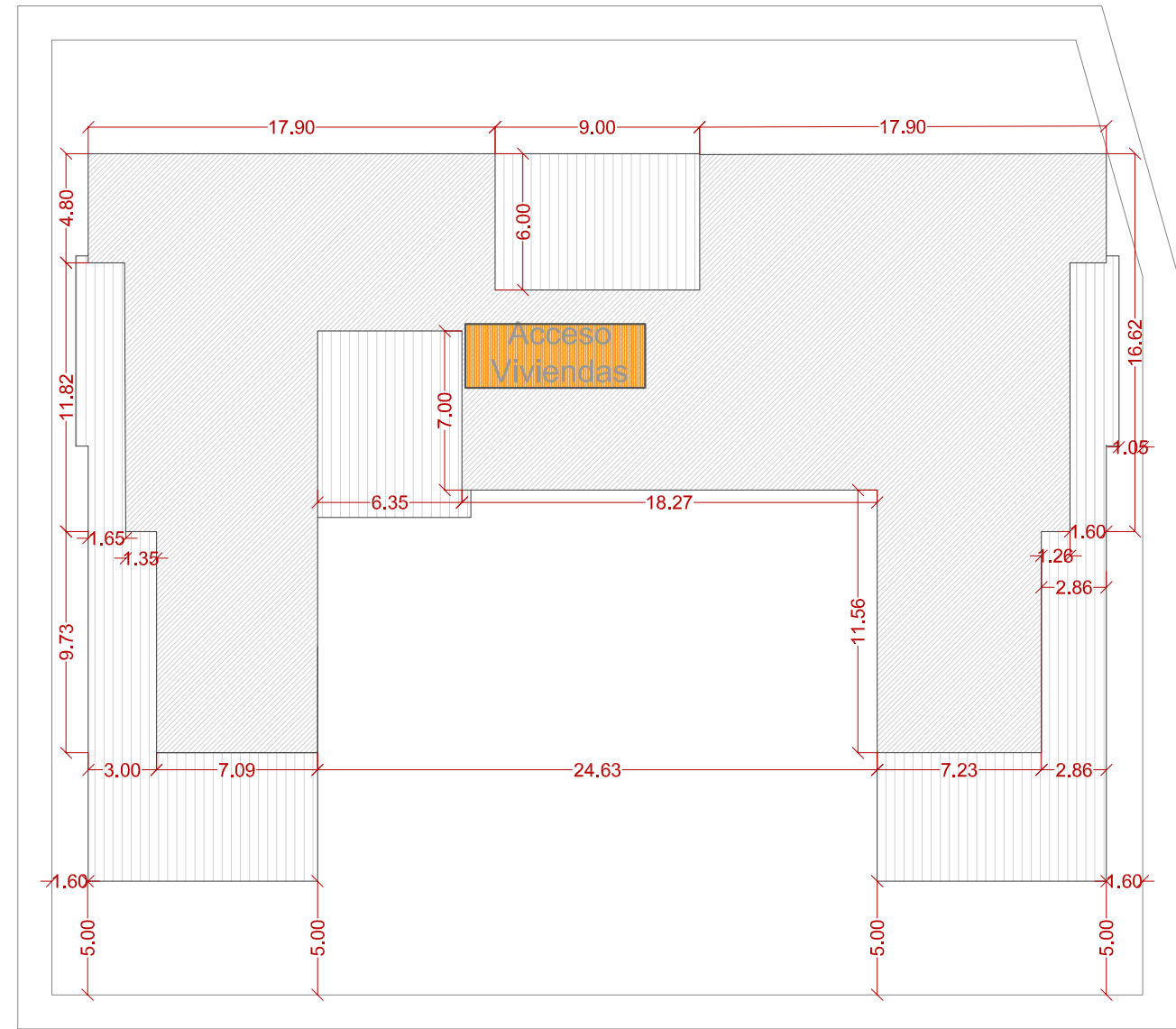


Alzado Norte, Calle Río Mundo

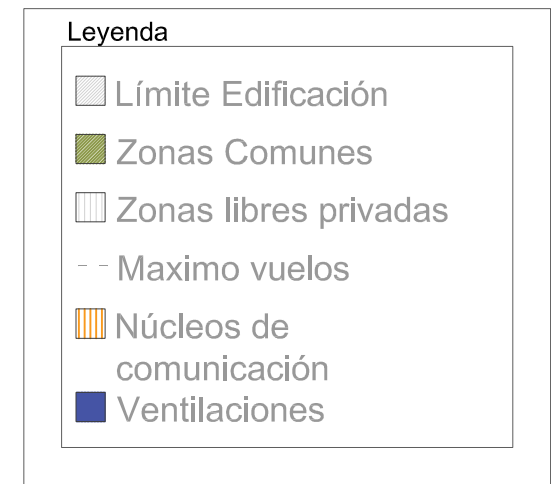




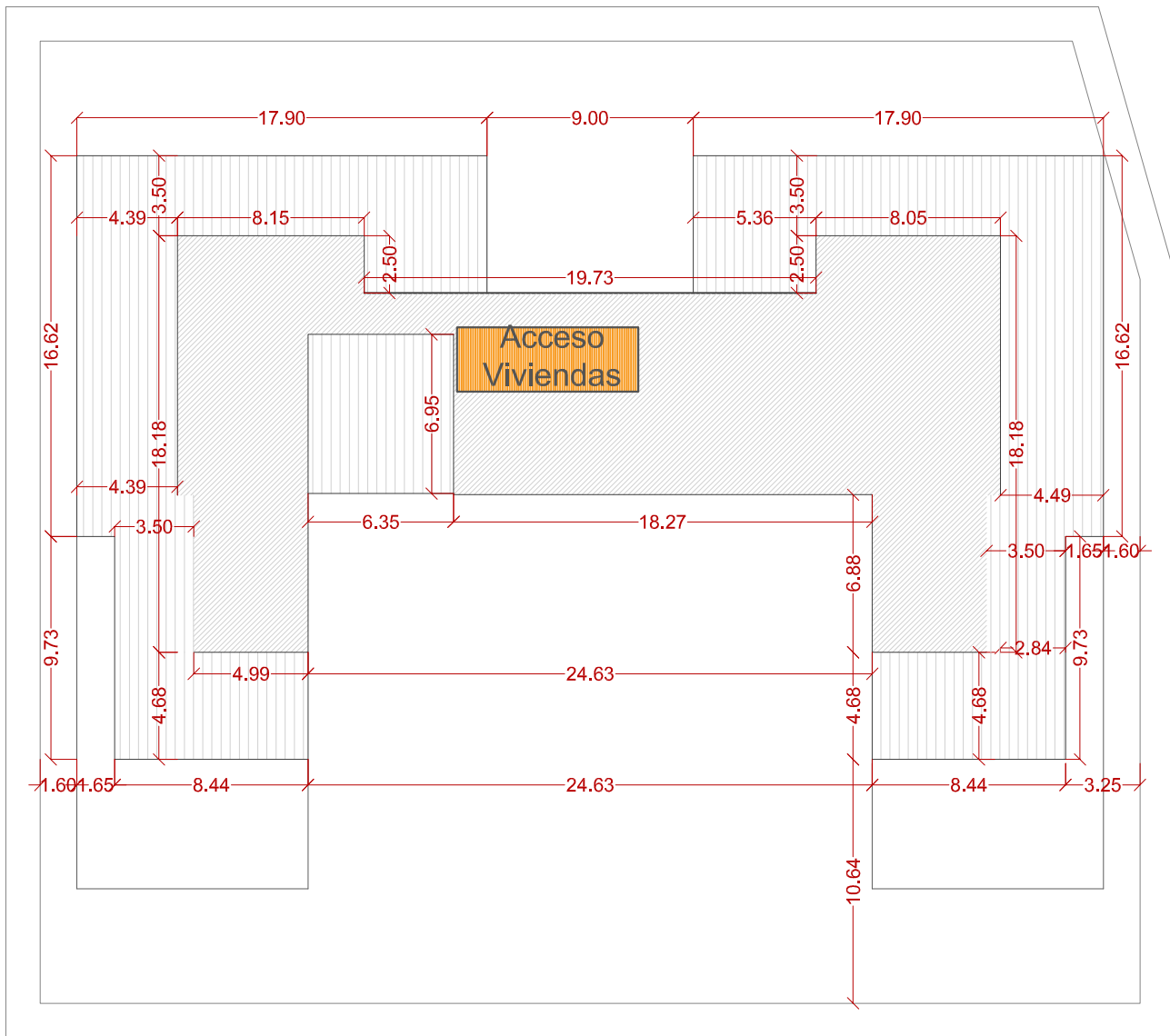
Planta Tercera



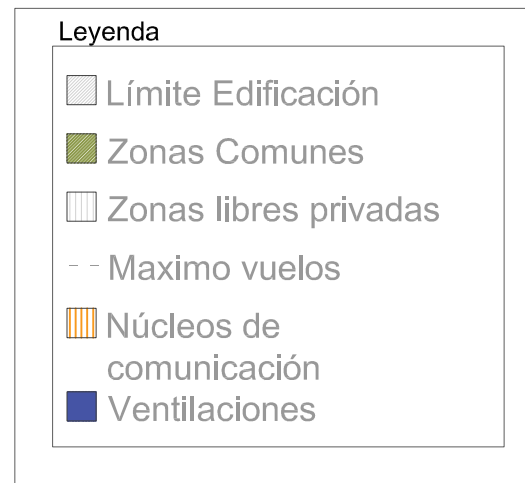
Planta Cuarta



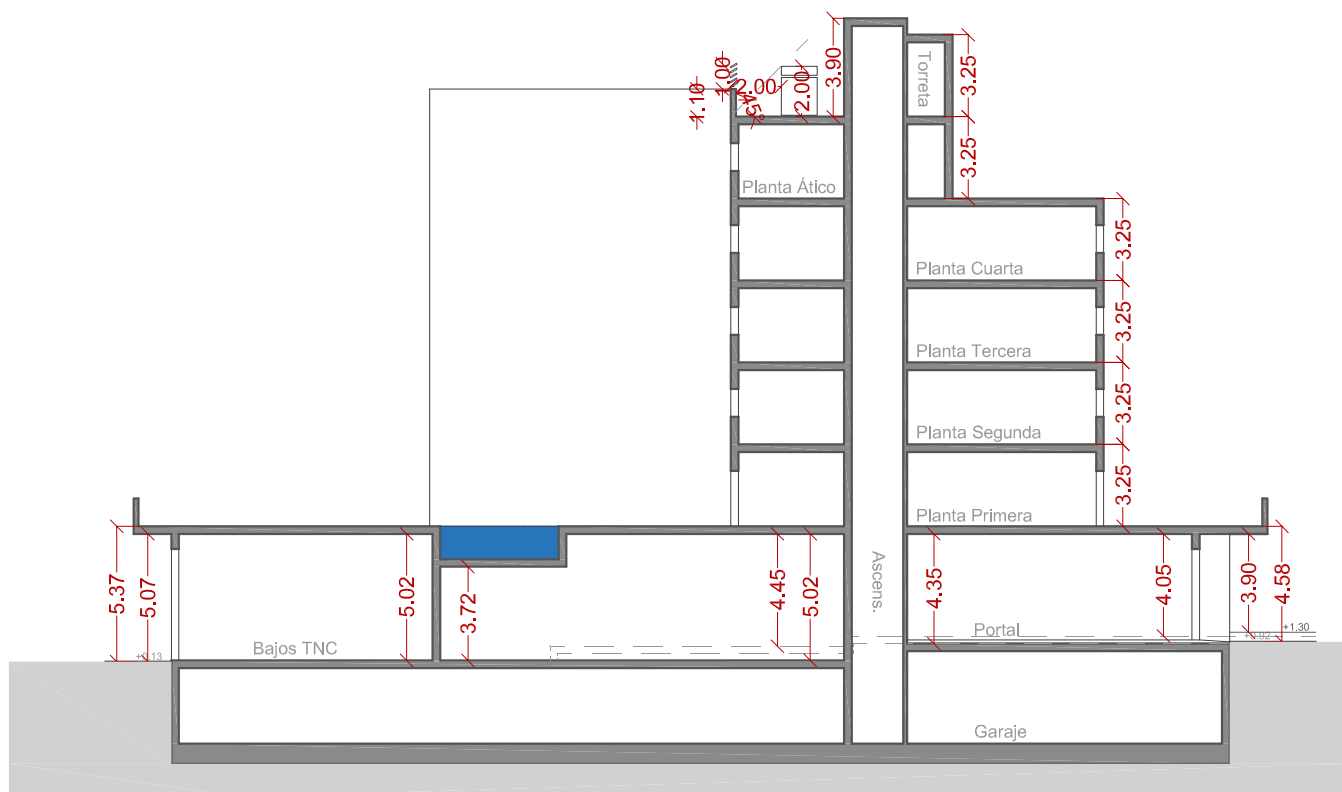
Alzado Este, Calle Aguas del Hospital



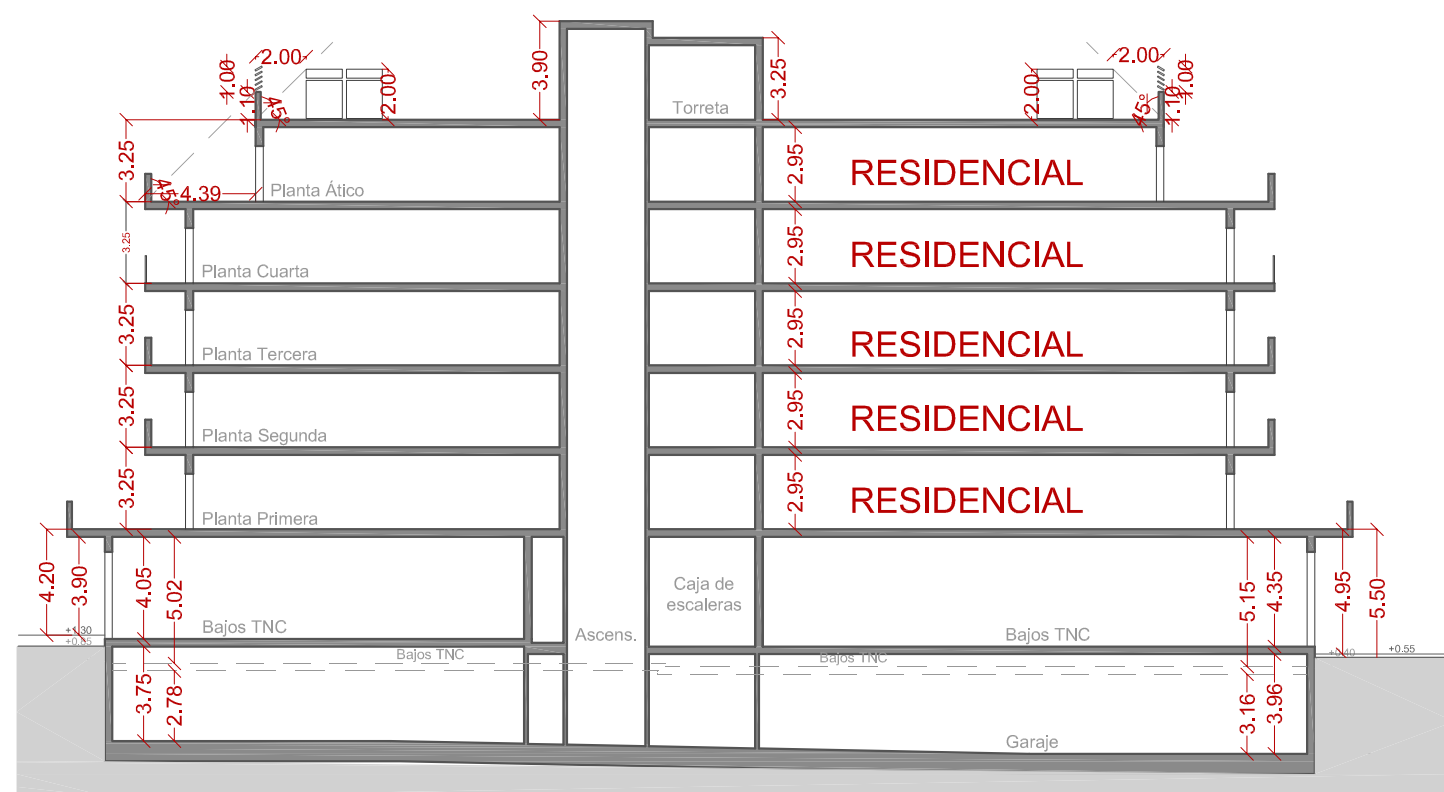
Planta Ático



Alzado Oeste, Calle Río Guadalhorce



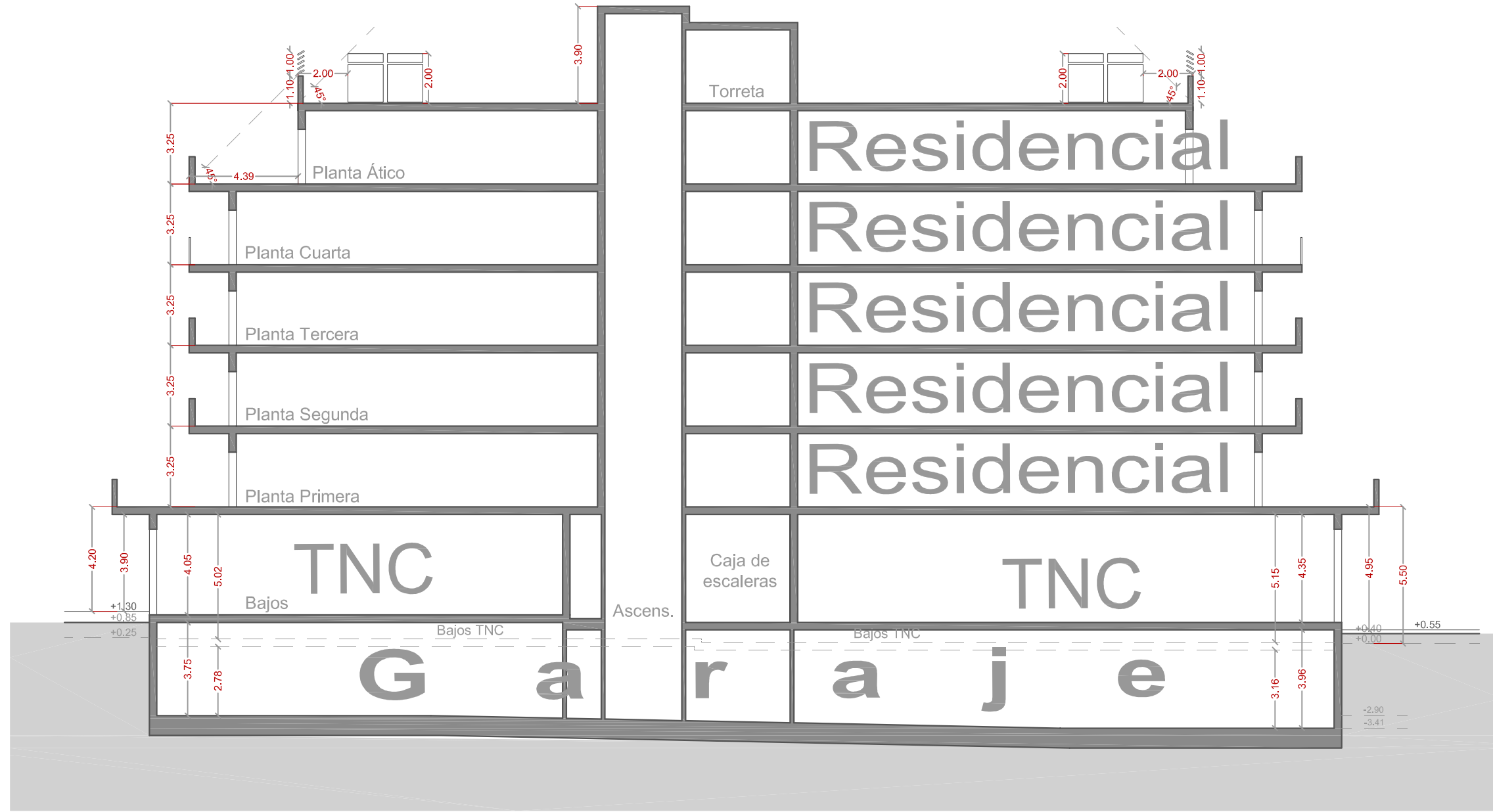
Sección Transversal




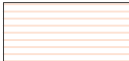

Sección Longitudinal







Atico	RESIDENCIAL	
4º Planta		
3º Planta		4.001,52 m <sup>2</sup> Max. 41 Viviendas
2º Planta		
1º Planta		
Planta Baja		TNC
Garaje		2.000,66 m <sup>2</sup> C

-  Residencial
-  Terciario No Comercial
-  Garaje